

D&G Jewellery PTY LTD

(Trading as Dam Jewellery)

Findings Catalogue

March - 2023



Phone: **02 9261 8819**

Email: info@damjewellery.com

Website: www.damjewellery.com

Address: Level 5, Suite 506
250 Pitt Street
Sydney NSW 2000

Contents

	Pages
Clasps	3 - 9
Earrings	10 - 29
Miscellaneous	30 - 34
Pendants	35 - 42
Settings	43 - 55

Dear Customers,

If you are unable to find what you are looking for in our catalogue then please call us. We frequently get new stock that has yet to be updated in the catalogue.

We can also help you achieve the desired effect with an alternative finding.

Some items in our catalogue are "special order" in certain materials. This is not marked in the catalogue so please call to check availability.

Express Post is available upon request.

Many thanks,

Dam

Clasps

Swivel

C1



Size (mm)	S/S	9ct Y/G	9ct W/G	9ct R/G	Platinum	18ct Y/G	18ct W/G	18ct R/G
15	✓	✓		✓		✓		
19	✓	✓		✓	✓	✓		
22	✓	✓		✓		✓		
26	✓	✓		✓				

Parrot Clasps

C2



Size (mm)	S/S	9ct Y/G	9ct W/G	9ct R/G	Platinum	18ct Y/G	18ct W/G	18ct R/G
7	✓	✓				✓	✓	
8	✓	✓	✓	✓		✓	✓	
9	✓	✓	✓	✓	✓	✓	✓	✓
10							✓	
11	✓	✓	✓	✓		✓	✓	✓
13	✓	✓	✓	✓		✓	✓	✓
16	✓	✓	✓	✓		✓	✓	✓
17	✓	✓	✓	✓		✓	✓	
18	✓	✓	✓	✓		✓	✓	
20		✓						
22		✓						
8L		✓						
10L		✓						
11L						✓		
12L		✓					✓	
14L		✓						

Cartier Clasps

C3



Size (mm)	S/S	9ct Y/G	9ct W/G	9ct R/G	Platinum	18ct Y/G	18ct W/G	18ct R/G
8					✓	✓	✓	✓
9	✓	✓	✓	✓	✓	✓	✓	✓
11	✓	✓	✓			✓	✓	
13	✓		✓			✓	✓	
16	✓		✓			✓	✓	
9L		✓				✓		
11L		✓				✓		
13L		✓						
16L		✓						
6x11							✓	

Bolt Ring

C4



Size (mm)	S/S	9ct Y/G	9ct W/G	9ct R/G	Platinum	18ct Y/G	18ct W/G	18ct R/G
4.5	✓	✓					✓	
5	✓	✓	✓	✓	✓	✓	✓	
5.5	✓	✓		✓		✓	✓	
6	✓	✓	✓	✓		✓	✓	
7	✓	✓	✓	✓		✓	✓	
8	✓	✓	✓	✓		✓		
5L							✓	

Clasps

Box Clasp



C5

Size (mm)	S/S	9ct Y/G	9ct W/G	9ct R/G	Platinum	18ct Y/G	18ct W/G	18ct R/G
2.5		✓				✓		
3		✓				✓	✓	
3.5		✓				✓	✓	
4		✓				✓	✓	
4.5		✓				✓	✓	
5		✓				✓	✓	
6		✓				✓	✓	
7		✓				✓	✓	
8		✓				✓	✓	
9						✓		
10		✓						

Trigger



C6

Size (mm)	S/S	9ct Y/G	9ct W/G	9ct R/G	Platinum	18ct Y/G	18ct W/G	18ct R/G
10 x 7	✓	✓						
15 x 9	✓	✓						
20 x 12	✓	✓						

Bayonet



C7

Size (mm)	S/S	9ct Y/G	9ct W/G	9ct R/G	Platinum	18ct Y/G	18ct W/G	18ct R/G
1.8	✓	✓				✓		
2.7	✓	✓	✓			✓	✓	
3.5	✓	✓	✓			✓	✓	
4.5	✓	✓	✓			✓	✓	
5.5	✓	✓	✓			✓	✓	
6.5	✓						✓	

Heavy Bolt Ring



C8

Size (mm)	S/S	9ct Y/G	9ct W/G	9ct R/G	Platinum	18ct Y/G	18ct W/G	18ct R/G
10	✓	✓						
12	✓	✓	✓	✓		✓		
14	✓	✓	✓	✓		✓		
16	✓	✓	✓	✓		✓		
18	✓	✓	✓	✓		✓		
20	✓	✓	✓	✓		✓		
12L		✓						
14L		✓						
16L		✓						
20L		✓						

Heavy Bolt Ring With Ends



C9

Size (mm)	S/S	9ct Y/G	9ct W/G	9ct R/G	Platinum	18ct Y/G	18ct W/G	18ct R/G
10	✓							
11	✓							
12	✓	✓	✓	✓				
13	✓							
14	✓	✓	✓	✓				
16	✓	✓	✓	✓				
18	✓	✓	✓	✓				
20	✓	✓	✓	✓				

Clasps

Pad Lock Plain



C10

Size (mm)	S/S	9ct Y/G	9ct W/G	9ct R/G	Platinum	18ct Y/G	18ct W/G	18ct R/G
9	✓	✓		✓				
11	✓	✓		✓				
13	✓	✓		✓				
15	✓	✓		✓				
18	✓	✓		✓				

Pad Lock Engraved



C11

Size (mm)	S/S	9ct Y/G	9ct W/G	9ct R/G	Platinum	18ct Y/G	18ct W/G	18ct R/G
9	✓	✓		✓				
11	✓	✓		✓				
13	✓	✓		✓				
15	✓	✓		✓				
18	✓	✓		✓				

Puffed Heart Filigree



C12

Size (mm)	S/S	9ct Y/G	9ct W/G	9ct R/G	Platinum	18ct Y/G	18ct W/G	18ct R/G
13	✓	✓		✓				
16	✓	✓						
19	✓	✓						
21	✓							

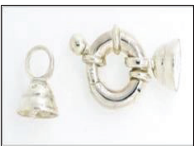
Puffed Heart



C13

Size (mm)	S/S	9ct Y/G	9ct W/G	9ct R/G	Platinum	18ct Y/G	18ct W/G	18ct R/G
11	✓	✓		✓				
13	✓	✓		✓				
15	✓	✓		✓				
18	✓	✓		✓				

Clasp



C14

Size (mm)	S/S	9ct Y/G	9ct W/G	9ct R/G	Platinum	18ct Y/G	18ct W/G	18ct R/G
7.2	✓							
8.8	✓							
9	✓							

Clasp



C15

Size (mm)	S/S	9ct Y/G	9ct W/G	9ct R/G	Platinum	18ct Y/G	18ct W/G	18ct R/G
1.9	✓							

Clasps

Padlock



C16

Size (mm)	S/S	9ct Y/G	9ct W/G	9ct R/G	Platinum	18ct Y/G	18ct W/G	18ct R/G
9	✓							
11.5	✓							

Ball Plain And Corrugated



CP1

Size (mm)	S/S	9ct Y/G	9ct W/G	9ct R/G	Platinum	18ct Y/G	18ct W/G	18ct R/G
5		✓						
6	✓	✓	✓			✓		
7	✓		✓			✓		
8	✓							
9	✓		✓					
10	✓		✓					
12	✓							
13	✓							
14	✓							

S/S Magnetic Ball Clasp



CP1C

Size (mm)	S/S	9ct Y/G	9ct W/G	9ct R/G	Platinum	18ct Y/G	18ct W/G	18ct R/G
8	✓							
10	✓							
12	✓							
13	✓							

S/S Magnetic Oval Clasp



CP1D

Size (mm)	S/S	9ct Y/G	9ct W/G	9ct R/G	Platinum	18ct Y/G	18ct W/G	18ct R/G
9.5 S	✓							
13 M	✓							
16 L	✓							

Clasps



CP2

Size (mm)	S/S	9ct Y/G	9ct W/G	9ct R/G	Platinum	18ct Y/G	18ct W/G	18ct R/G
10.5	✓							

Clasps



CP4

Size (mm)	S/S	9ct Y/G	9ct W/G	9ct R/G	Platinum	18ct Y/G	18ct W/G	18ct R/G
1 Strand	✓							

Clasps

Clasps

CP4A



Size (mm)	S/S	9ct Y/G	9ct W/G	9ct R/G	Platinum	18ct Y/G	18ct W/G	18ct R/G
2 Strand	✓							

Clasps

CP4B



Size (mm)	S/S	9ct Y/G	9ct W/G	9ct R/G	Platinum	18ct Y/G	18ct W/G	18ct R/G
3 Strand	✓							

Clasps

CP5



Size (mm)	S/S	9ct Y/G	9ct W/G	9ct R/G	Platinum	18ct Y/G	18ct W/G	18ct R/G
9 x 17	✓							

Clasps

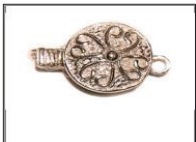
CP7



Size (mm)	S/S	9ct Y/G	9ct W/G	9ct R/G	Platinum	18ct Y/G	18ct W/G	18ct R/G
8	✓							

Clasps

CP9



Size (mm)	S/S	9ct Y/G	9ct W/G	9ct R/G	Platinum	18ct Y/G	18ct W/G	18ct R/G
9	✓							

Clasps

CP11



Size (mm)	S/S	9ct Y/G	9ct W/G	9ct R/G	Platinum	18ct Y/G	18ct W/G	18ct R/G
8 x 16	✓							

Clasps

CP12



Size (mm)	S/S	9ct Y/G	9ct W/G	9ct R/G	Platinum	18ct Y/G	18ct W/G	18ct R/G
11.5		✓						

Clasps

Clasps

CP13



Size (mm)	S/S	9ct Y/G	9ct W/G	9ct R/G	Platinum	18ct Y/G	18ct W/G	18ct R/G
8	✓							

Clasps

CP14



Size (mm)	S/S	9ct Y/G	9ct W/G	9ct R/G	Platinum	18ct Y/G	18ct W/G	18ct R/G
8	✓							

Filigree

CP15



Size (mm)	S/S	9ct Y/G	9ct W/G	9ct R/G	Platinum	18ct Y/G	18ct W/G	18ct R/G
5 x 11	✓	✓						

Clasps

CP16



Size (mm)	S/S	9ct Y/G	9ct W/G	9ct R/G	Platinum	18ct Y/G	18ct W/G	18ct R/G
5 x 11	✓							

Clasps

CP17



Size (mm)	S/S	9ct Y/G	9ct W/G	9ct R/G	Platinum	18ct Y/G	18ct W/G	18ct R/G
10	✓							

Oval

CP18



Size (mm)	S/S	9ct Y/G	9ct W/G	9ct R/G	Platinum	18ct Y/G	18ct W/G	18ct R/G
6 x 16		✓						

Clasps

CP19



Size (mm)	S/S	9ct Y/G	9ct W/G	9ct R/G	Platinum	18ct Y/G	18ct W/G	18ct R/G
12.5	✓							

Clasps

Clasps

CP21



Size (mm)	S/S	9ct Y/G	9ct W/G	9ct R/G	Platinum	18ct Y/G	18ct W/G	18ct R/G
13 x 12.5	✓							

Clasps

CP28



Size (mm)	S/S	9ct Y/G	9ct W/G	9ct R/G	Platinum	18ct Y/G	18ct W/G	18ct R/G
9 x 10		✓						

Earrings

Bezel Open Back



EBB1

Size (mm)	S/S	9ct Y/G	9ct W/G	9ct R/G	Platinum	18ct Y/G	18ct W/G	18ct R/G
2.5		✓	✓	✓	✓	✓	✓	✓
3		✓	✓	✓	✓	✓	✓	✓
3.2		✓	✓	✓	✓	✓	✓	✓
3.5		✓	✓	✓	✓	✓	✓	✓
3.7		✓	✓	✓	✓	✓	✓	✓
4		✓	✓	✓	✓	✓	✓	✓
4.2		✓	✓	✓	✓	✓	✓	✓
4.5		✓	✓	✓	✓	✓	✓	✓
4.7		✓	✓	✓	✓	✓	✓	✓
5		✓	✓	✓	✓	✓	✓	✓
5.5		✓	✓	✓	✓	✓	✓	✓
6		✓	✓	✓	✓	✓	✓	✓
6.5		✓	✓	✓	✓	✓	✓	✓
7		✓	✓	✓	✓	✓	✓	✓
7.5		✓	✓	✓	✓	✓	✓	✓
8		✓	✓	✓	✓	✓	✓	✓

* All sizes can be created in either Light or Heavy variants

Round Bezel With Window



EBB3

Size (mm)	S/S	9ct Y/G	9ct W/G	9ct R/G	Platinum	18ct Y/G	18ct W/G	18ct R/G
2.5		✓	✓	✓	✓	✓	✓	✓
3		✓	✓	✓	✓	✓	✓	✓
3.5		✓	✓	✓	✓	✓	✓	✓
4		✓	✓	✓	✓	✓	✓	✓
4.5		✓	✓	✓	✓	✓	✓	✓
5		✓	✓	✓	✓	✓	✓	✓
5.5		✓	✓	✓	✓	✓	✓	✓
6		✓	✓	✓	✓	✓	✓	✓
6.5		✓	✓	✓	✓	✓	✓	✓
7		✓	✓	✓	✓	✓	✓	✓
7.5		✓	✓	✓	✓	✓	✓	✓
8		✓	✓	✓	✓	✓	✓	✓
8.5		✓	✓	✓	✓	✓	✓	✓

Double Bezel Round Donut



EBB4

Size (mm)	S/S	9ct Y/G	9ct W/G	9ct R/G	Platinum	18ct Y/G	18ct W/G	18ct R/G
2.5		✓				✓		
3		✓	✓			✓		
3.5		✓	✓			✓		
4		✓	✓			✓		
4.5		✓	✓			✓		
5		✓	✓			✓		
5.5		✓	✓			✓		
6		✓	✓			✓		
6.5		✓	✓			✓		

Earrings

Fine Bezel

EBB5



Size (mm)	S/S	9ct Y/G	9ct W/G	9ct R/G	Platinum	18ct Y/G	18ct W/G	18ct R/G
2.4		✓	✓	✓	✓	✓	✓	✓
2.7		✓	✓	✓	✓	✓	✓	✓
3		✓	✓	✓	✓	✓	✓	✓
3.4		✓	✓	✓	✓	✓	✓	✓
3.7		✓	✓	✓	✓	✓	✓	✓
4		✓	✓	✓	✓	✓	✓	✓
4.5		✓	✓	✓	✓	✓	✓	✓
4.7		✓	✓	✓	✓	✓	✓	✓
5		✓	✓	✓	✓	✓	✓	✓
5.25		✓	✓	✓	✓	✓	✓	✓
5.5		✓	✓	✓	✓	✓	✓	✓
6		✓	✓	✓	✓	✓	✓	✓
6.5		✓	✓	✓	✓	✓	✓	✓
7		✓	✓	✓	✓			

Double Bezel

EBB6



Size (mm)	S/S	9ct Y/G	9ct W/G	9ct R/G	Platinum	18ct Y/G	18ct W/G	18ct R/G
2.5		✓	✓	✓	✓	✓	✓	✓
3		✓	✓	✓	✓	✓	✓	✓
3.5		✓	✓	✓	✓	✓	✓	✓
4		✓	✓	✓	✓	✓	✓	✓
4.5		✓	✓	✓	✓	✓	✓	✓
5		✓	✓	✓	✓	✓	✓	✓
5.5		✓	✓	✓	✓	✓	✓	✓
6		✓	✓	✓	✓	✓	✓	✓
6.5		✓	✓	✓	✓	✓	✓	✓

* All sizes can be created in either Light or Heavy variants

Donut

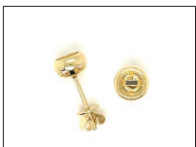
EBB8



Size (mm)	S/S	9ct Y/G	9ct W/G	9ct R/G	Platinum	18ct Y/G	18ct W/G	18ct R/G
2.5		✓	✓	✓	✓	✓	✓	✓
3		✓	✓	✓	✓	✓	✓	✓
3.5		✓	✓	✓	✓	✓	✓	✓
4		✓	✓	✓	✓	✓	✓	✓
4.5		✓	✓	✓	✓	✓	✓	✓
5		✓	✓	✓	✓	✓	✓	✓
5.5		✓	✓	✓	✓	✓	✓	✓
6		✓	✓	✓	✓	✓	✓	✓
6.5		✓	✓	✓	✓	✓	✓	✓
7		✓	✓	✓	✓	✓	✓	✓
8		✓	✓	✓	✓	✓	✓	✓

Donut

EBB8A



Size (mm)	S/S	9ct Y/G	9ct W/G	9ct R/G	Platinum	18ct Y/G	18ct W/G	18ct R/G
2.5		✓	✓	✓	✓	✓	✓	✓
3		✓	✓	✓	✓	✓	✓	✓
3.5		✓	✓	✓	✓	✓	✓	✓
4		✓	✓	✓	✓	✓	✓	✓
4.5		✓	✓	✓	✓	✓	✓	✓
5		✓	✓	✓	✓	✓	✓	✓
5.5		✓	✓	✓	✓	✓	✓	✓
6		✓	✓	✓	✓	✓	✓	✓
6.5		✓	✓	✓	✓	✓	✓	✓
7		✓	✓	✓	✓	✓	✓	✓
8		✓	✓	✓	✓	✓	✓	✓

Earrings

Heavy Bezel

EBB10



Size (mm)	S/S	9ct Y/G	9ct W/G	9ct R/G	Platinum	18ct Y/G	18ct W/G	18ct R/G
2		✓	✓	✓	✓	✓	✓	✓
2.5		✓	✓	✓	✓	✓	✓	✓
3		✓	✓	✓	✓	✓	✓	✓
3.5		✓	✓	✓	✓	✓	✓	✓
4		✓	✓	✓	✓	✓	✓	✓
4.5		✓	✓	✓	✓	✓	✓	✓
5		✓	✓	✓	✓	✓	✓	✓
5.5		✓	✓	✓	✓	✓	✓	✓
6		✓	✓	✓	✓	✓	✓	✓
6.5		✓	✓	✓	✓	✓	✓	✓
7		✓	✓	✓	✓	✓	✓	✓

Window Princess Bezel

EPB1



Size (mm)	S/S	9ct Y/G	9ct W/G	9ct R/G	Platinum	18ct Y/G	18ct W/G	18ct R/G
2		✓	✓	✓	✓	✓	✓	✓
2.5		✓	✓	✓	✓	✓	✓	✓
3		✓	✓	✓	✓	✓	✓	✓
3.5		✓	✓	✓	✓	✓	✓	✓
4		✓	✓	✓	✓	✓	✓	✓
4.5		✓	✓	✓	✓	✓	✓	✓
5		✓	✓	✓	✓	✓	✓	✓
5.5		✓	✓	✓	✓	✓	✓	✓
6		✓	✓	✓	✓	✓	✓	✓
6.5		✓	✓	✓	✓	✓	✓	✓

Double Bezel Princess

EPB2



Size (mm)	S/S	9ct Y/G	9ct W/G	9ct R/G	Platinum	18ct Y/G	18ct W/G	18ct R/G
2.5		✓	✓	✓	✓	✓	✓	✓
3		✓	✓	✓	✓	✓	✓	✓
3.5		✓	✓	✓	✓	✓	✓	✓
4		✓	✓	✓	✓	✓	✓	✓
4.5		✓	✓	✓	✓	✓	✓	✓
5		✓	✓	✓	✓	✓	✓	✓
5.5		✓	✓	✓	✓	✓	✓	✓
6		✓	✓	✓	✓	✓	✓	✓
6.5		✓	✓	✓	✓	✓	✓	✓
7		✓	✓	✓	✓	✓	✓	✓

Pointy Back

EPB3



Size (mm)	S/S	9ct Y/G	9ct W/G	9ct R/G	Platinum	18ct Y/G	18ct W/G	18ct R/G
2		✓	✓	✓	✓	✓	✓	✓
2.5		✓	✓	✓	✓	✓	✓	✓
3		✓	✓	✓	✓	✓	✓	✓
3.5		✓	✓	✓	✓	✓	✓	✓
4		✓	✓	✓	✓	✓	✓	✓
4.5		✓	✓	✓	✓	✓	✓	✓
5		✓	✓	✓	✓	✓	✓	✓
5.5		✓	✓	✓	✓	✓	✓	✓
6		✓	✓	✓	✓	✓	✓	✓
6.5		✓	✓	✓	✓	✓	✓	✓
7		✓	✓	✓	✓	✓	✓	✓
7.5		✓	✓	✓	✓	✓	✓	✓

Earrings

Bezel Oval



EOB1

Size (mm)	S/S	9ct Y/G	9ct W/G	9ct R/G	Platinum	18ct Y/G	18ct W/G	18ct R/G
5 x 3		✓	✓	✓	✓	✓	✓	✓
6 x 4		✓	✓	✓	✓	✓	✓	✓
7 x 5		✓	✓	✓	✓	✓	✓	✓
8 x 6		✓	✓	✓	✓	✓	✓	✓
9 x 7		✓	✓	✓	✓	✓	✓	✓
10 x 8		✓	✓	✓	✓	✓	✓	✓
12 x 10		✓	✓	✓	✓	✓	✓	✓

Bezel Oval With Window



EOB2

Size (mm)	S/S	9ct Y/G	9ct W/G	9ct R/G	Platinum	18ct Y/G	18ct W/G	18ct R/G
5 x 3		✓	✓	✓	✓	✓	✓	✓
6 x 4		✓	✓	✓	✓	✓	✓	✓
7 x 5		✓	✓	✓	✓	✓	✓	✓
8 x 6		✓	✓	✓	✓	✓	✓	✓
9 x 7		✓	✓	✓	✓	✓	✓	✓
10 x 8		✓	✓	✓	✓	✓	✓	✓
12 x 10		✓	✓	✓	✓	✓	✓	✓

Round 4 Claw With Screwbacks



EB4C3

Size (mm)	S/S	9ct Y/G	9ct W/G	9ct R/G	Platinum	18ct Y/G	18ct W/G	18ct R/G
2		✓	✓	✓	✓	✓	✓	✓
2.5		✓	✓	✓	✓	✓	✓	✓
3		✓	✓	✓	✓	✓	✓	✓
3.5		✓	✓	✓	✓	✓	✓	✓
3.75		✓	✓	✓	✓	✓	✓	✓
4		✓	✓	✓	✓	✓	✓	✓
4.5		✓	✓	✓	✓	✓	✓	✓
5		✓	✓	✓	✓	✓	✓	✓
5.5		✓	✓	✓	✓	✓	✓	✓
6		✓	✓	✓	✓	✓	✓	✓
6.5		✓	✓	✓	✓	✓	✓	✓
6.75		✓	✓	✓	✓	✓	✓	✓
7		✓	✓	✓	✓	✓	✓	✓
7.5		✓	✓	✓	✓	✓	✓	✓
8		✓	✓	✓	✓	✓	✓	✓
8.5		✓	✓	✓	✓	✓	✓	✓

* All sizes can be created in either Light or Heavy variants

Earrings

G4

EB4C4



Size (mm)	S/S	9ct Y/G	9ct W/G	9ct R/G	Platinum	18ct Y/G	18ct W/G	18ct R/G
1.8	✓	✓	✓	✓	✓	✓	✓	✓
2	✓	✓	✓	✓	✓	✓	✓	✓
2.4	✓	✓	✓	✓	✓	✓	✓	✓
2.7	✓	✓	✓	✓	✓	✓	✓	✓
3	✓	✓	✓	✓	✓	✓	✓	✓
3.5	✓	✓	✓	✓	✓	✓	✓	✓
3.7	✓	✓	✓	✓	✓	✓	✓	✓
4	✓	✓	✓	✓	✓	✓	✓	✓
4.25	✓	✓	✓	✓	✓	✓	✓	✓
4.5	✓	✓	✓	✓	✓	✓	✓	✓
4.75	✓	✓	✓	✓	✓	✓	✓	✓
5	✓	✓	✓	✓	✓	✓	✓	✓
5.25	✓	✓	✓	✓	✓	✓	✓	✓
5.5	✓	✓	✓	✓	✓	✓	✓	✓
6	✓	✓	✓	✓	✓	✓	✓	✓
6.4	✓	✓	✓	✓	✓	✓	✓	✓
7	✓	✓	✓	✓	✓	✓	✓	✓

* All sizes can be created in either Light or Heavy variants

Double Claws

EB4C6



Size (mm)	S/S	9ct Y/G	9ct W/G	9ct R/G	Platinum	18ct Y/G	18ct W/G	18ct R/G
3		✓	✓	✓	✓	✓	✓	✓
3.5		✓	✓	✓	✓	✓	✓	✓
4		✓	✓	✓	✓	✓	✓	✓
4.5		✓	✓	✓	✓	✓	✓	✓
5		✓	✓	✓	✓	✓	✓	✓
5.5		✓	✓	✓	✓	✓	✓	✓
6		✓	✓	✓	✓	✓	✓	✓
6.5		✓	✓	✓	✓	✓	✓	✓

Round 4 Claws Flat Rail

EB4C7



Size (mm)	S/S	9ct Y/G	9ct W/G	9ct R/G	Platinum	18ct Y/G	18ct W/G	18ct R/G
2		✓	✓	✓	✓	✓	✓	✓
2.5		✓	✓	✓	✓	✓	✓	✓
3		✓	✓	✓	✓	✓	✓	✓
3.5		✓	✓	✓	✓	✓	✓	✓
3.75		✓	✓	✓	✓	✓	✓	✓
4		✓	✓	✓	✓	✓	✓	✓
4.25		✓	✓	✓	✓	✓	✓	✓
4.5		✓	✓	✓	✓	✓	✓	✓
5		✓	✓	✓	✓	✓	✓	✓
5.5		✓	✓	✓	✓	✓	✓	✓
6		✓	✓	✓	✓	✓	✓	✓
6.5		✓	✓	✓	✓	✓	✓	✓
7		✓	✓	✓	✓	✓	✓	✓
7.5		✓	✓	✓	✓	✓	✓	✓
8		✓	✓	✓	✓	✓	✓	✓
8.5		✓	✓	✓	✓	✓	✓	✓
9		✓	✓	✓	✓	✓	✓	✓

* All sizes can be created in either Light or Heavy variants

Earrings

TY 4 Claw

EB4C8



Size (mm)	S/S	9ct Y/G	9ct W/G	9ct R/G	Platinum	18ct Y/G	18ct W/G	18ct R/G
2.5		✓	✓	✓	✓	✓	✓	✓
3		✓	✓	✓	✓	✓	✓	✓
3.5		✓	✓	✓	✓	✓	✓	✓
4		✓	✓	✓	✓	✓	✓	✓
4.5		✓	✓	✓	✓	✓	✓	✓
5		✓	✓	✓	✓	✓	✓	✓
5.5		✓	✓	✓	✓	✓	✓	✓
6		✓	✓	✓	✓	✓	✓	✓
6.5		✓	✓	✓	✓	✓	✓	✓
7		✓	✓	✓	✓	✓	✓	✓
7.5		✓	✓	✓	✓	✓	✓	✓
8		✓	✓	✓	✓	✓	✓	✓

* All sizes can be created in either Light or Heavy variants

Round 4 Claws Round Rail

EB4C10



Size (mm)	S/S	9ct Y/G	9ct W/G	9ct R/G	Platinum	18ct Y/G	18ct W/G	18ct R/G
2		✓	✓	✓	✓	✓	✓	✓
2.5		✓	✓	✓	✓	✓	✓	✓
3		✓	✓	✓	✓	✓	✓	✓
3.5		✓	✓	✓	✓	✓	✓	✓
3.75		✓	✓	✓	✓	✓	✓	✓
4		✓	✓	✓	✓	✓	✓	✓
4.2		✓	✓	✓	✓	✓	✓	✓
4.5		✓	✓	✓	✓	✓	✓	✓
4.75		✓	✓	✓	✓	✓	✓	✓
5		✓	✓	✓	✓	✓	✓	✓
5.5		✓	✓	✓	✓	✓	✓	✓
6		✓	✓	✓	✓	✓	✓	✓
6.5		✓	✓	✓	✓	✓	✓	✓
7		✓	✓	✓	✓	✓	✓	✓
7.5		✓	✓	✓	✓	✓	✓	✓
8		✓	✓	✓	✓	✓	✓	✓
8.5		✓	✓	✓	✓	✓	✓	✓
9		✓	✓	✓	✓	✓	✓	✓

* All sizes can be created in either Light or Heavy variants

Martini

EB4C12



Size (mm)	S/S	9ct Y/G	9ct W/G	9ct R/G	Platinum	18ct Y/G	18ct W/G	18ct R/G
3		✓	✓	✓	✓	✓	✓	✓
3.5		✓	✓	✓	✓	✓	✓	✓
4		✓	✓	✓	✓	✓	✓	✓
4.5		✓	✓	✓	✓	✓	✓	✓
5		✓	✓	✓	✓	✓	✓	✓
5.5		✓	✓	✓	✓	✓	✓	✓
6		✓	✓	✓	✓	✓	✓	✓
6.5		✓	✓	✓	✓	✓	✓	✓
7		✓	✓	✓	✓	✓	✓	✓
7.5		✓	✓	✓	✓	✓	✓	✓
8		✓	✓	✓	✓	✓	✓	✓
8.5		✓	✓	✓	✓	✓	✓	✓
9		✓	✓	✓	✓	✓	✓	✓
10		✓	✓	✓	✓	✓	✓	✓
11		✓	✓	✓	✓	✓	✓	✓

Earrings

4 Claws Tulip

EB4C13



Size (mm)	S/S	9ct Y/G	9ct W/G	9ct R/G	Platinum	18ct Y/G	18ct W/G	18ct R/G
2.5		✓	✓	✓	✓	✓	✓	✓
3		✓	✓	✓	✓	✓	✓	✓
3.5		✓	✓	✓	✓	✓	✓	✓
4		✓	✓	✓	✓	✓	✓	✓
4.5		✓	✓	✓	✓	✓	✓	✓
5		✓	✓	✓	✓	✓	✓	✓
5.5		✓	✓	✓	✓	✓	✓	✓
6		✓	✓	✓	✓	✓	✓	✓
6.5		✓	✓	✓	✓	✓	✓	✓
7		✓	✓	✓	✓	✓	✓	✓
7.5		✓	✓	✓	✓	✓	✓	✓
8		✓	✓	✓	✓	✓	✓	✓
8.5		✓	✓	✓	✓	✓	✓	✓

4 Claws Light

EB4C14



Size (mm)	S/S	9ct Y/G	9ct W/G	9ct R/G	Platinum	18ct Y/G	18ct W/G	18ct R/G
2.5						✓	✓	
3						✓	✓	
3.5						✓	✓	
4						✓	✓	
4.5						✓	✓	
5						✓	✓	
5.5						✓	✓	
6						✓	✓	
6.5						✓	✓	
7						✓	✓	
7.5						✓	✓	
8						✓	✓	

Round Claws Emerald

EE4C1



Size (mm)	S/S	9ct Y/G	9ct W/G	9ct R/G	Platinum	18ct Y/G	18ct W/G	18ct R/G
5 x 3		✓	✓	✓	✓	✓	✓	✓
6 x 4		✓	✓	✓	✓	✓	✓	✓
7 x 5		✓	✓	✓	✓	✓	✓	✓
8 x 6		✓	✓	✓	✓	✓	✓	✓
9 x 7		✓	✓	✓	✓	✓	✓	✓
10 x 8		✓	✓	✓	✓	✓	✓	✓
11 x 9		✓	✓	✓	✓	✓	✓	✓
12 x 10		✓	✓	✓	✓	✓	✓	✓

4 Claws Oval

EO4C1



Size (mm)	S/S	9ct Y/G	9ct W/G	9ct R/G	Platinum	18ct Y/G	18ct W/G	18ct R/G
5 x 3		✓	✓	✓	✓	✓	✓	✓
6 x 4		✓	✓	✓	✓	✓	✓	✓
7 x 5		✓	✓	✓	✓	✓	✓	✓
7.5 x 5.5		✓	✓	✓	✓	✓	✓	✓
8 x 6		✓	✓	✓	✓	✓	✓	✓
9 x 7		✓	✓	✓	✓	✓	✓	✓
10 x 8		✓	✓	✓	✓	✓	✓	✓
12 x 10		✓	✓	✓	✓	✓	✓	✓

Earrings

4 Claws Oval Fine



EO4C2

Size (mm)	S/S	9ct Y/G	9ct W/G	9ct R/G	Platinum	18ct Y/G	18ct W/G	18ct R/G
5 x 3	✓	✓				✓	✓	
6 x 4	✓	✓				✓	✓	
7 x 5	✓	✓				✓	✓	
8 x 6	✓	✓				✓	✓	
9 x 7	✓	✓				✓	✓	
10 x 8	✓	✓				✓	✓	

Princess V Claw



EP4C1

Size (mm)	S/S	9ct Y/G	9ct W/G	9ct R/G	Platinum	18ct Y/G	18ct W/G	18ct R/G
2		✓	✓	✓	✓	✓	✓	✓
2.5		✓	✓	✓	✓	✓	✓	✓
3		✓	✓	✓	✓	✓	✓	✓
3.5		✓	✓	✓	✓	✓	✓	✓
4		✓	✓	✓	✓	✓	✓	✓
4.5		✓	✓	✓	✓	✓	✓	✓
5		✓	✓	✓	✓	✓	✓	✓
5.5		✓	✓	✓	✓	✓	✓	✓
6		✓	✓	✓	✓	✓	✓	✓
6.5		✓	✓	✓	✓	✓	✓	✓

Princess Round Claw



EP4C2

Size (mm)	S/S	9ct Y/G	9ct W/G	9ct R/G	Platinum	18ct Y/G	18ct W/G	18ct R/G
2		✓	✓	✓	✓	✓	✓	✓
2.5		✓	✓	✓	✓	✓	✓	✓
2.7		✓	✓	✓	✓	✓	✓	✓
3		✓	✓	✓	✓	✓	✓	✓
3.3		✓	✓	✓	✓	✓	✓	✓
3.5		✓	✓	✓	✓	✓	✓	✓
4		✓	✓	✓	✓	✓	✓	✓
4.2		✓	✓	✓	✓	✓	✓	✓
4.5		✓	✓	✓	✓	✓	✓	✓
5		✓	✓	✓	✓	✓	✓	✓
5.5		✓	✓	✓	✓	✓	✓	✓
6		✓	✓	✓	✓	✓	✓	✓
6.5		✓	✓	✓	✓	✓	✓	✓
7		✓	✓	✓	✓	✓	✓	✓
7.5		✓	✓	✓	✓	✓	✓	✓
8		✓	✓	✓	✓	✓	✓	✓

Fine V Claw



EP4C4

Size (mm)	S/S	9ct Y/G	9ct W/G	9ct R/G	Platinum	18ct Y/G	18ct W/G	18ct R/G
3.5							✓	
4							✓	
4.5							✓	
5							✓	
5.5							✓	
6							✓	

Earrings

Princess V Corner Heavy

EP4C5



Size (mm)	S/S	9ct Y/G	9ct W/G	9ct R/G	Platinum	18ct Y/G	18ct W/G	18ct R/G
2.5		✓	✓	✓	✓	✓	✓	✓
3		✓	✓	✓	✓	✓	✓	✓
3.5		✓	✓	✓	✓	✓	✓	✓
4		✓	✓	✓	✓	✓	✓	✓
4.5		✓	✓	✓	✓	✓	✓	✓
5		✓	✓	✓	✓	✓	✓	✓
5.5		✓	✓	✓	✓	✓	✓	✓
6		✓	✓	✓	✓	✓	✓	✓
6.5		✓	✓	✓	✓	✓	✓	✓

Princess RD

EP4C6



Size (mm)	S/S	9ct Y/G	9ct W/G	9ct R/G	Platinum	18ct Y/G	18ct W/G	18ct R/G
3					✓			
3.5					✓			
4					✓			
4.5					✓			
5					✓			
5.5					✓			
6					✓			
6.5					✓			
7					✓			

6 Claws Round

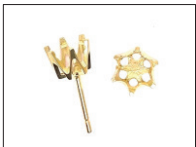
EB6C1



Size (mm)	S/S	9ct Y/G	9ct W/G	9ct R/G	Platinum	18ct Y/G	18ct W/G	18ct R/G
2.5		✓	✓	✓	✓	✓	✓	✓
3		✓	✓	✓	✓	✓	✓	✓
3.5		✓	✓	✓	✓	✓	✓	✓
4		✓	✓	✓	✓	✓	✓	✓
4.5		✓	✓	✓	✓	✓	✓	✓
5		✓	✓	✓	✓	✓	✓	✓
5.5		✓	✓	✓	✓	✓	✓	✓
6		✓	✓	✓	✓	✓	✓	✓
6.5		✓	✓	✓	✓	✓	✓	✓
7		✓	✓	✓	✓	✓	✓	✓
7.5		✓	✓	✓	✓	✓	✓	✓
8		✓	✓	✓	✓	✓	✓	✓

CY Crown

EB6C2



Size (mm)	S/S	9ct Y/G	9ct W/G	9ct R/G	Platinum	18ct Y/G	18ct W/G	18ct R/G
2.5		✓	✓	✓	✓	✓	✓	✓
3		✓	✓	✓	✓	✓	✓	✓
3.5		✓	✓	✓	✓	✓	✓	✓
3.7		✓	✓	✓	✓	✓	✓	✓
4		✓	✓	✓	✓	✓	✓	✓
4.5		✓	✓	✓	✓	✓	✓	✓
4.7		✓	✓	✓	✓	✓	✓	✓
5		✓	✓	✓	✓	✓	✓	✓
5.5		✓	✓	✓	✓	✓	✓	✓
5.7		✓	✓	✓	✓	✓	✓	✓
6		✓	✓	✓	✓	✓	✓	✓
6.5		✓	✓	✓	✓	✓	✓	✓
6.7		✓	✓	✓	✓	✓	✓	✓
7		✓	✓	✓	✓	✓	✓	✓

Earrings

TY 6 Claw

EB6C5



Size (mm)	S/S	9ct Y/G	9ct W/G	9ct R/G	Platinum	18ct Y/G	18ct W/G	18ct R/G
3		✓	✓	✓	✓	✓	✓	✓
3.5		✓	✓	✓	✓	✓	✓	✓
4		✓	✓	✓	✓	✓	✓	✓
4.5		✓	✓	✓	✓	✓	✓	✓
5		✓	✓	✓	✓	✓	✓	✓
5.5		✓	✓	✓	✓	✓	✓	✓
6		✓	✓	✓	✓	✓	✓	✓
6.5		✓	✓	✓	✓	✓	✓	✓
7		✓	✓	✓	✓	✓	✓	✓
7.5		✓	✓	✓	✓	✓	✓	✓
8		✓	✓	✓	✓	✓	✓	✓

6 Claws Tulip

EB6C6



Size (mm)	S/S	9ct Y/G	9ct W/G	9ct R/G	Platinum	18ct Y/G	18ct W/G	18ct R/G
2.5		✓	✓	✓	✓	✓	✓	✓
3		✓	✓	✓	✓	✓	✓	✓
3.5		✓	✓	✓	✓	✓	✓	✓
4		✓	✓	✓	✓	✓	✓	✓
4.5		✓	✓	✓	✓	✓	✓	✓
5		✓	✓	✓	✓	✓	✓	✓
5.5		✓	✓	✓	✓	✓	✓	✓
6		✓	✓	✓	✓	✓	✓	✓
6.5		✓	✓	✓	✓	✓	✓	✓
7		✓	✓	✓	✓	✓	✓	✓
7.5		✓	✓	✓	✓	✓	✓	✓
8		✓	✓	✓	✓	✓	✓	✓

6 Claws Curved

EB6C7



Size (mm)	S/S	9ct Y/G	9ct W/G	9ct R/G	Platinum	18ct Y/G	18ct W/G	18ct R/G
3					✓			
3.5					✓			
4					✓			
4.5					✓			
5					✓			
5.5					✓			
6					✓			
6.5					✓			
7					✓			

Pear Earring

EP3C1



Size (mm)	S/S	9ct Y/G	9ct W/G	9ct R/G	Platinum	18ct Y/G	18ct W/G	18ct R/G
5 x 3		✓	✓	✓	✓	✓	✓	✓
5 x 4		✓	✓	✓	✓	✓	✓	✓
6 x 4		✓	✓	✓	✓	✓	✓	✓
7 x 5		✓	✓	✓	✓	✓	✓	✓
8 x 5		✓	✓	✓	✓	✓	✓	✓
9 x 6		✓	✓	✓	✓	✓	✓	✓
10 x 7		✓	✓	✓	✓	✓	✓	✓
12 x 8		✓	✓	✓	✓	✓	✓	✓
14 x 9		✓	✓	✓	✓	✓	✓	✓

Earrings

4 Claws Marquise

EM4C1



Size (mm)	S/S	9ct Y/G	9ct W/G	9ct R/G	Platinum	18ct Y/G	18ct W/G	18ct R/G
4 x 2		✓	✓	✓	✓	✓	✓	✓
5 x 3		✓	✓	✓	✓	✓	✓	✓
6 x 3		✓	✓	✓	✓	✓	✓	✓
7 x 4		✓	✓	✓	✓	✓	✓	✓
8 x 4		✓	✓	✓	✓	✓	✓	✓
9 x 5		✓	✓	✓	✓	✓	✓	✓
10 x 5		✓	✓	✓	✓	✓	✓	✓
12 x 6		✓	✓	✓	✓	✓	✓	✓

3 Claws Tulip

EB3C14



Size (mm)	S/S	9ct Y/G	9ct W/G	9ct R/G	Platinum	18ct Y/G	18ct W/G	18ct R/G
2.5		✓	✓	✓	✓	✓	✓	✓
3		✓	✓	✓	✓	✓	✓	✓
3.5		✓	✓	✓	✓	✓	✓	✓
4		✓	✓	✓	✓	✓	✓	✓
4.5		✓	✓	✓	✓	✓	✓	✓
5		✓	✓	✓	✓	✓	✓	✓
5.5		✓	✓	✓	✓	✓	✓	✓
6		✓	✓	✓	✓	✓	✓	✓
6.5		✓	✓	✓	✓	✓	✓	✓
7		✓	✓	✓	✓	✓	✓	✓
7.5		✓	✓	✓	✓	✓	✓	✓
8		✓	✓	✓	✓	✓	✓	✓
8.5		✓	✓	✓	✓	✓	✓	✓

Sleepers

E1



Size (mm)	S/S	9ct Y/G	9ct W/G	9ct R/G	Platinum	18ct Y/G	18ct W/G	18ct R/G
8	✓							
10	✓	✓	✓	✓	✓	✓	✓	✓
11		✓						
12		✓	✓	✓	✓	✓	✓	✓
13	✓	✓						
16		✓						

Ball Studs

E2



Size (mm)	S/S	9ct Y/G	9ct W/G	9ct R/G	Platinum	18ct Y/G	18ct W/G	18ct R/G
3	✓	✓						
4	✓	✓	✓					
5	✓	✓	✓					
6	✓	✓	✓					
7		✓						
8		✓						

Earrings

E3



Size (mm)	S/S	9ct Y/G	9ct W/G	9ct R/G	Platinum	18ct Y/G	18ct W/G	18ct R/G
7 x 9	✓							
8 x 10	✓							

Earrings

Earrings



E4

Size (mm)	S/S	9ct Y/G	9ct W/G	9ct R/G	Platinum	18ct Y/G	18ct W/G	18ct R/G
12	✓							

Earrings



E5

Size (mm)	S/S	9ct Y/G	9ct W/G	9ct R/G	Platinum	18ct Y/G	18ct W/G	18ct R/G
5 x 7	✓							
8 x 10	✓							

Cup Hook (21mm)



EPE1

Size (mm)	S/S	9ct Y/G	9ct W/G	9ct R/G	Platinum	18ct Y/G	18ct W/G	18ct R/G
3.8	✓	✓	✓	✓	✓	✓	✓	✓

Hook



EPE2

Size (mm)	S/S	9ct Y/G	9ct W/G	9ct R/G	Platinum	18ct Y/G	18ct W/G	18ct R/G
31	✓	✓				✓		

HV Sleeper



EPE3

Size (mm)	S/S	9ct Y/G	9ct W/G	9ct R/G	Platinum	18ct Y/G	18ct W/G	18ct R/G
12	✓	✓	✓	✓	✓	✓	✓	✓
14	✓	✓	✓	✓	✓	✓	✓	✓

Cont Peg (Hook 13mm)



EPE4

Size (mm)	S/S	9ct Y/G	9ct W/G	9ct R/G	Platinum	18ct Y/G	18ct W/G	18ct R/G
5	✓							

Earrings

Pearl Cup Fluted



EPE5

Size (mm)	S/S	9ct Y/G	9ct W/G	9ct R/G	Platinum	18ct Y/G	18ct W/G	18ct R/G
3	✓	✓	✓			✓	✓	
4	✓	✓	✓			✓	✓	
5	✓	✓	✓			✓	✓	
6	✓	✓	✓			✓	✓	
8	✓	✓	✓			✓	✓	

Cup



EPE6

Size (mm)	S/S	9ct Y/G	9ct W/G	9ct R/G	Platinum	18ct Y/G	18ct W/G	18ct R/G
4	✓							

Pave Set Diamond Hook - 8 Dia. 0.04ct



EPE7

Size (mm)	S/S	9ct Y/G	9ct W/G	9ct R/G	Platinum	18ct Y/G	18ct W/G	18ct R/G
23						✓	✓	✓

Cup Clip-ons



EPE8

Size (mm)	S/S	9ct Y/G	9ct W/G	9ct R/G	Platinum	18ct Y/G	18ct W/G	18ct R/G
3.5						✓	✓	

Cup Hook



EPE9

Size (mm)	S/S	9ct Y/G	9ct W/G	9ct R/G	Platinum	18ct Y/G	18ct W/G	18ct R/G
4.3		✓	✓					

Pearl Cup Plain



EPE10

Size (mm)	S/S	9ct Y/G	9ct W/G	9ct R/G	Platinum	18ct Y/G	18ct W/G	18ct R/G
3	✓	✓				✓	✓	
4	✓	✓				✓	✓	
5	✓	✓				✓	✓	
6	✓	✓						

Earrings

Cup Hook (29mm)



EPE11

Size (mm)	S/S	9ct Y/G	9ct W/G	9ct R/G	Platinum	18ct Y/G	18ct W/G	18ct R/G
5		✓	✓					

Pearl Hook (26mm)



EPE12

Size (mm)	S/S	9ct Y/G	9ct W/G	9ct R/G	Platinum	18ct Y/G	18ct W/G	18ct R/G
6.5		✓						

Pearl Hook (20mm)



EPE13

Size (mm)	S/S	9ct Y/G	9ct W/G	9ct R/G	Platinum	18ct Y/G	18ct W/G	18ct R/G
4	✓							
6	✓							

Diamond Hook Claw Set - 18 Dia. 0.07ct



EPE14

Size (mm)	S/S	9ct Y/G	9ct W/G	9ct R/G	Platinum	18ct Y/G	18ct W/G	18ct R/G
18						✓	✓	✓

Diamond Hook - 22 Dia. 0.27ct



EPE16

Size (mm)	S/S	9ct Y/G	9ct W/G	9ct R/G	Platinum	18ct Y/G	18ct W/G	18ct R/G
22						✓	✓	

Huggie



EPE17

Size (mm)	S/S	9ct Y/G	9ct W/G	9ct R/G	Platinum	18ct Y/G	18ct W/G	18ct R/G
14	✓	✓	✓	✓	✓	✓	✓	✓

Cluster



EPE18

Size (mm)	S/S	9ct Y/G	9ct W/G	9ct R/G	Platinum	18ct Y/G	18ct W/G	18ct R/G
0	✓	✓	✓	✓	✓	✓	✓	✓

Earrings

Alfa



EB1

Size (mm)	S/S	9ct Y/G	9ct W/G	9ct R/G	Platinum	18ct Y/G	18ct W/G	18ct R/G
6						✓	✓	
7						✓	✓	✓

Straight Fitting



EB2

Size (mm)	S/S	9ct Y/G	9ct W/G	9ct R/G	Platinum	18ct Y/G	18ct W/G	18ct R/G
23.5	✓	✓				✓	✓	

Butterfly



EB3

Size (mm)	S/S	9ct Y/G	9ct W/G	9ct R/G	Platinum	18ct Y/G	18ct W/G	18ct R/G
9							✓	
11							✓	

Posts



EB4

Size (mm)	S/S	9ct Y/G	9ct W/G	9ct R/G	Platinum	18ct Y/G	18ct W/G	18ct R/G
0.9 x 10.5	✓	✓	✓	✓	✓			

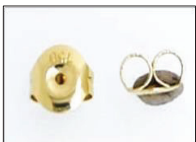
Posts



EB4A

Size (mm)	S/S	9ct Y/G	9ct W/G	9ct R/G	Platinum	18ct Y/G	18ct W/G	18ct R/G
0.85 x 11		✓	✓	✓	✓	✓	✓	✓

Butterfly



EB5

Size (mm)	S/S	9ct Y/G	9ct W/G	9ct R/G	Platinum	18ct Y/G	18ct W/G	18ct R/G
5.5		✓	✓	✓	✓	✓	✓	✓

Earrings

Butterfly



EB6

Size (mm)	S/S	9ct Y/G	9ct W/G	9ct R/G	Platinum	18ct Y/G	18ct W/G	18ct R/G
4.5		✓				✓	✓	
5	✓	✓	✓	✓	✓	✓	✓	✓
5.5		✓	✓	✓	✓	✓	✓	✓
6	✓							
6.5		✓	✓	✓	✓	✓	✓	✓
7	✓							
8	✓	✓	✓			✓	✓	
10						✓	✓	

Butterfly with Loop



EB6S

Size (mm)	S/S	9ct Y/G	9ct W/G	9ct R/G	Platinum	18ct Y/G	18ct W/G	18ct R/G
7						✓	✓	
8						✓	✓	
10						✓	✓	

Butterfly



EB7

Size (mm)	S/S	9ct Y/G	9ct W/G	9ct R/G	Platinum	18ct Y/G	18ct W/G	18ct R/G
M	✓	✓	✓	✓		✓	✓	✓
H	✓	✓	✓	✓		✓	✓	

Butterfly



EB8

Size (mm)	S/S	9ct Y/G	9ct W/G	9ct R/G	Platinum	18ct Y/G	18ct W/G	18ct R/G
8	✓	✓	✓	✓		✓	✓	
10		✓	✓			✓		

Butterfly



EB9

Size (mm)	S/S	9ct Y/G	9ct W/G	9ct R/G	Platinum	18ct Y/G	18ct W/G	18ct R/G
7	✓	✓						

Butterfly



EB10

Size (mm)	S/S	9ct Y/G	9ct W/G	9ct R/G	Platinum	18ct Y/G	18ct W/G	18ct R/G
10	✓	✓	✓			✓		

Earrings

Key Hole



EB11

Size (mm)	S/S	9ct Y/G	9ct W/G	9ct R/G	Platinum	18ct Y/G	18ct W/G	18ct R/G
S	✓							
L	✓	✓						

Screwpost



EB12

Size (mm)	S/S	9ct Y/G	9ct W/G	9ct R/G	Platinum	18ct Y/G	18ct W/G	18ct R/G
4.5		✓	✓		✓	✓	✓	
5		✓	✓	✓		✓	✓	✓
5.5		✓	✓	✓	✓	✓	✓	✓
6.5		✓	✓			✓	✓	✓
8			✓			✓	✓	
10						✓	✓	

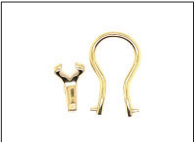
Screwpost



EB12A

Size (mm)	S/S	9ct Y/G	9ct W/G	9ct R/G	Platinum	18ct Y/G	18ct W/G	18ct R/G
4.8				✓	✓			
5.5					✓			

Key Hole



EB13

Size (mm)	S/S	9ct Y/G	9ct W/G	9ct R/G	Platinum	18ct Y/G	18ct W/G	18ct R/G
13		✓	✓			✓	✓	
15		✓	✓			✓	✓	
17		✓	✓			✓	✓	

Banjo Clip



EB15

Size (mm)	S/S	9ct Y/G	9ct W/G	9ct R/G	Platinum	18ct Y/G	18ct W/G	18ct R/G
13		✓						

Earrings



EB17

Size (mm)	S/S	9ct Y/G	9ct W/G	9ct R/G	Platinum	18ct Y/G	18ct W/G	18ct R/G
12						✓	✓	

Earrings

Earrings



Lever back



Plastic Butterfly (Baby)



Kwopen



Kwclosed



Kwbead



Conth



EB18

Size (mm)	S/S	9ct Y/G	9ct W/G	9ct R/G	Platinum	18ct Y/G	18ct W/G	18ct R/G
13.5						✓	✓	

EB20

Size (mm)	S/S	9ct Y/G	9ct W/G	9ct R/G	Platinum	18ct Y/G	18ct W/G	18ct R/G
4.5 x 4		✓	✓			✓	✓	
6 x 5		✓	✓			✓	✓	

EB21

Size (mm)	S/S	9ct Y/G	9ct W/G	9ct R/G	Platinum	18ct Y/G	18ct W/G	18ct R/G
0						✓	✓	

EH1

Size (mm)	S/S	9ct Y/G	9ct W/G	9ct R/G	Platinum	18ct Y/G	18ct W/G	18ct R/G
15	✓	✓	✓			✓	✓	

EH2

Size (mm)	S/S	9ct Y/G	9ct W/G	9ct R/G	Platinum	18ct Y/G	18ct W/G	18ct R/G
L	✓	✓	✓				✓	
H			✓				✓	

EH3

Size (mm)	S/S	9ct Y/G	9ct W/G	9ct R/G	Platinum	18ct Y/G	18ct W/G	18ct R/G
18.5	✓	✓				✓		

EH5

Size (mm)	S/S	9ct Y/G	9ct W/G	9ct R/G	Platinum	18ct Y/G	18ct W/G	18ct R/G
S	✓							

Earrings

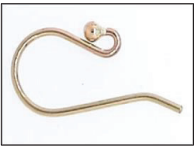
Conth



EH6

Size (mm)	S/S	9ct Y/G	9ct W/G	9ct R/G	Platinum	18ct Y/G	18ct W/G	18ct R/G
15	✓	✓	✓			✓	✓	

Kwball



EH7

Size (mm)	S/S	9ct Y/G	9ct W/G	9ct R/G	Platinum	18ct Y/G	18ct W/G	18ct R/G
S	✓	✓	✓	✓	✓	✓	✓	✓
M	✓	✓	✓	✓	✓	✓	✓	✓
L	✓	✓	✓	✓	✓	✓	✓	✓

U Earscrew



EH9

Size (mm)	S/S	9ct Y/G	9ct W/G	9ct R/G	Platinum	18ct Y/G	18ct W/G	18ct R/G
H		✓	✓			✓	✓	

Ball Hook Stud



EH12

Size (mm)	S/S	9ct Y/G	9ct W/G	9ct R/G	Platinum	18ct Y/G	18ct W/G	18ct R/G
3	✓	✓	✓			✓		
4	✓	✓	✓			✓		
5	✓	✓	✓			✓		
6	✓							

Half-ball Hook Stud



EH13

Size (mm)	S/S	9ct Y/G	9ct W/G	9ct R/G	Platinum	18ct Y/G	18ct W/G	18ct R/G
3		✓	✓	✓		✓	✓	

Hinge Screwback



EH14

Size (mm)	S/S	9ct Y/G	9ct W/G	9ct R/G	Platinum	18ct Y/G	18ct W/G	18ct R/G
Hinge		✓	✓			✓	✓	

Earrings

Continental ear clip

EH15



Size (mm)	S/S	9ct Y/G	9ct W/G	9ct R/G	Platinum	18ct Y/G	18ct W/G	18ct R/G
15	✓	✓	✓	✓		✓	✓	

Pearl Hook

EH16



Size (mm)	S/S	9ct Y/G	9ct W/G	9ct R/G	Platinum	18ct Y/G	18ct W/G	18ct R/G
S	✓	✓	✓	✓	✓	✓	✓	✓
M	✓	✓	✓	✓	✓	✓	✓	✓
L	✓	✓	✓	✓	✓	✓	✓	✓

Hook

EH17



Size (mm)	S/S	9ct Y/G	9ct W/G	9ct R/G	Platinum	18ct Y/G	18ct W/G	18ct R/G
24								✓

Hook

EH18



Size (mm)	S/S	9ct Y/G	9ct W/G	9ct R/G	Platinum	18ct Y/G	18ct W/G	18ct R/G
25.5						✓		✓

Miscellaneous

Final



M1

Size (mm)	S/S	9ct Y/G	9ct W/G	9ct R/G	Platinum	18ct Y/G	18ct W/G	18ct R/G
3	✓	✓	✓			✓		
3.5	✓	✓				✓		
4	✓	✓	✓			✓		
5	✓	✓	✓			✓		
6	✓	✓						
7	✓	✓						
8	✓	✓						
9	✓	✓						

Tube End Caps



M3

Size (mm)	S/S	9ct Y/G	9ct W/G	9ct R/G	Platinum	18ct Y/G	18ct W/G	18ct R/G
2.2	✓	✓	✓			✓		
2.7	✓	✓	✓			✓		
3	✓	✓						
4	✓	✓	✓			✓		

Round Finals



M4

Size (mm)	S/S	9ct Y/G	9ct W/G	9ct R/G	Platinum	18ct Y/G	18ct W/G	18ct R/G
2	✓	✓						
3	✓	✓						
4	✓	✓						
5	✓	✓						

End Caps



M6

Size (mm)	S/S	9ct Y/G	9ct W/G	9ct R/G	Platinum	18ct Y/G	18ct W/G	18ct R/G
14	✓	✓		✓		✓		
16	✓	✓		✓				
18	✓	✓		✓				
20	✓	✓		✓				
22		✓		✓				

Jump Ring Open



M7

Size (mm)	S/S	9ct Y/G	9ct W/G	9ct R/G	Platinum	18ct Y/G	18ct W/G	18ct R/G
2	✓	✓				✓	✓	
3	✓	✓	✓	✓		✓		
4	✓	✓	✓	✓		✓		
5	✓	✓	✓	✓		✓	✓	
6	✓	✓	✓	✓		✓		
7	✓	✓	✓	✓		✓		
8	✓	✓		✓				
9	✓	✓						
10	✓	✓						
12	✓	✓						
14	✓	✓						

Miscellaneous

Link Lock



M8

Size (mm)	S/S	9ct Y/G	9ct W/G	9ct R/G	Platinum	18ct Y/G	18ct W/G	18ct R/G
5.5	✓	✓	✓	✓				

Split Ring



M9

Size (mm)	S/S	9ct Y/G	9ct W/G	9ct R/G	Platinum	18ct Y/G	18ct W/G	18ct R/G
5	✓	✓						
6	✓	✓						
7	✓	✓						
8	✓							
9	✓							
12	✓							

Cuff Links Fixed Base



M11

Size (mm)	S/S	9ct Y/G	9ct W/G	9ct R/G	Platinum	18ct Y/G	18ct W/G	18ct R/G
S			✓					
L		✓	✓			✓	✓	

Cuff Links Swivel Base



M12

Size (mm)	S/S	9ct Y/G	9ct W/G	9ct R/G	Platinum	18ct Y/G	18ct W/G	18ct R/G
Heavy	✓	✓						

Safety Chain



M13

Size (mm)	S/S	9ct Y/G	9ct W/G	9ct R/G	Platinum	18ct Y/G	18ct W/G	18ct R/G
Light 40	✓	✓		✓		✓		
Med 50	✓	✓	✓	✓		✓		
Hvy 60	✓	✓		✓		✓		
XHvy 80		✓				✓		

Safety Chain Pin



M14

Size (mm)	S/S	9ct Y/G	9ct W/G	9ct R/G	Platinum	18ct Y/G	18ct W/G	18ct R/G
15	✓	✓		✓				

Miscellaneous

Roller Catch

M15



Size (mm)	S/S	9ct Y/G	9ct W/G	9ct R/G	Platinum	18ct Y/G	18ct W/G	18ct R/G
S		✓				✓		

Roller Catch 3

M17



Size (mm)	S/S	9ct Y/G	9ct W/G	9ct R/G	Platinum	18ct Y/G	18ct W/G	18ct R/G
XS		✓		✓		✓	✓	✓
L						✓	✓	

Pin

M18



Size (mm)	S/S	9ct Y/G	9ct W/G	9ct R/G	Platinum	18ct Y/G	18ct W/G	18ct R/G
Pin S						✓	✓	
Pin L			✓			✓	✓	
Joint S			✓			✓	✓	
Joint L						✓	✓	

Pin & Joint 2

M19



Size (mm)	S/S	9ct Y/G	9ct W/G	9ct R/G	Platinum	18ct Y/G	18ct W/G	18ct R/G
Pin 42	✓	✓						
Joint S	✓	✓				✓		
Joint L	✓							

Barrel Catch

M20



Size (mm)	S/S	9ct Y/G	9ct W/G	9ct R/G	Platinum	18ct Y/G	18ct W/G	18ct R/G
Barrel						✓	✓	

Headed Pin

M23



Size (mm)	S/S	9ct Y/G	9ct W/G	9ct R/G	Platinum	18ct Y/G	18ct W/G	18ct R/G
30	✓	✓						
45	✓							
19	✓							

Miscellaneous

T Bar 2



M28

Size (mm)	S/S	9ct Y/G	9ct W/G	9ct R/G	Platinum	18ct Y/G	18ct W/G	18ct R/G
S		✓		✓		✓		
L		✓		✓		✓		

Toggle Set



M35

Size (mm)	S/S	9ct Y/G	9ct W/G	9ct R/G	Platinum	18ct Y/G	18ct W/G	18ct R/G
S	✓							
M	✓							
L	✓							

Flower Spacer



M36

Size (mm)	S/S	9ct Y/G	9ct W/G	9ct R/G	Platinum	18ct Y/G	18ct W/G	18ct R/G
S	✓							
L	✓							

Roundel 1



M41

Size (mm)	S/S	9ct Y/G	9ct W/G	9ct R/G	Platinum	18ct Y/G	18ct W/G	18ct R/G
0	✓							

Hollow Balls



M44

Size (mm)	S/S	9ct Y/G	9ct W/G	9ct R/G	Platinum	18ct Y/G	18ct W/G	18ct R/G
2	✓							
2.5	✓	✓						
3	✓	✓						
4	✓	✓						
5	✓	✓						
6	✓	✓						
7	✓	✓						
8	✓	✓						
9	✓							
10		✓						

Ring Clips



M45

Size (mm)	S/S	9ct Y/G	9ct W/G	9ct R/G	Platinum	18ct Y/G	18ct W/G	18ct R/G
2	✓	✓	✓					
3	✓	✓	✓					
4	✓	✓	✓					
5	✓	✓	✓					
7	✓	✓	✓					

Miscellaneous

Cufflink

M47



Size (mm)	S/S	9ct Y/G	9ct W/G	9ct R/G	Platinum	18ct Y/G	18ct W/G	18ct R/G
0	✓							

Roller Catch

M48



Size (mm)	S/S	9ct Y/G	9ct W/G	9ct R/G	Platinum	18ct Y/G	18ct W/G	18ct R/G
0	✓	✓	✓	✓		✓		

Miscellaneous

M49



Size (mm)	S/S	9ct Y/G	9ct W/G	9ct R/G	Platinum	18ct Y/G	18ct W/G	18ct R/G
7 x 13.5	✓	✓	✓	✓	✓	✓	✓	✓

Pendants

Swing Bail

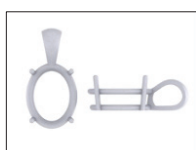
PO4C2



Size (mm)	S/S	9ct Y/G	9ct W/G	9ct R/G	Platinum	18ct Y/G	18ct W/G	18ct R/G
5 x 4		✓					✓	
6 x 4	✓	✓				✓	✓	
7 x 5	✓	✓				✓	✓	
8 x 6	✓	✓				✓	✓	
9 x 7	✓	✓				✓	✓	
10 x 8	✓	✓				✓	✓	

Round Rail Large Bail

PO4C3



Size (mm)	S/S	9ct Y/G	9ct W/G	9ct R/G	Platinum	18ct Y/G	18ct W/G	18ct R/G
5 x 3		✓	✓	✓	✓	✓	✓	✓
6 x 4		✓	✓	✓	✓	✓	✓	✓
7 x 5		✓	✓	✓	✓	✓	✓	✓
8 x 6		✓	✓	✓	✓	✓	✓	✓
9 x 7		✓	✓	✓	✓	✓	✓	✓
10 x 8		✓	✓	✓	✓	✓	✓	✓
11 x 9		✓	✓	✓	✓	✓	✓	✓
12 x 10		✓	✓	✓	✓	✓	✓	✓
13 x 10		✓	✓	✓	✓	✓	✓	✓
14 x 10		✓	✓	✓	✓	✓	✓	✓
14 x 12		✓	✓	✓	✓	✓	✓	✓
16 x 12		✓	✓	✓	✓	✓	✓	✓
18 x 13		✓	✓	✓	✓	✓	✓	✓
22 x 16		✓	✓	✓	✓	✓	✓	✓

G4

PB4C1



Size (mm)	S/S	9ct Y/G	9ct W/G	9ct R/G	Platinum	18ct Y/G	18ct W/G	18ct R/G
2		✓						
2.4						✓		
3		✓	✓			✓		
3.4		✓	✓			✓		
3.7			✓					
4		✓	✓					
4.4		✓	✓					
5		✓						

Flat Rail

PB4C2



Size (mm)	S/S	9ct Y/G	9ct W/G	9ct R/G	Platinum	18ct Y/G	18ct W/G	18ct R/G
2.5		✓	✓	✓	✓	✓	✓	✓
3		✓	✓	✓	✓	✓	✓	✓
3.5		✓	✓	✓	✓	✓	✓	✓
4		✓	✓	✓	✓	✓	✓	✓
4.5		✓	✓	✓	✓	✓	✓	✓
5		✓	✓	✓	✓	✓	✓	✓
5.5		✓	✓	✓	✓	✓	✓	✓
6		✓	✓	✓	✓	✓	✓	✓
6.5		✓	✓	✓	✓	✓	✓	✓
7		✓	✓	✓	✓	✓	✓	✓
7.5		✓	✓	✓	✓	✓	✓	✓
8		✓	✓	✓	✓	✓	✓	✓
8.5		✓	✓	✓	✓	✓	✓	✓
10		✓	✓	✓	✓	✓	✓	✓
11		✓	✓	✓	✓	✓	✓	✓
12		✓	✓	✓	✓	✓	✓	✓
13		✓	✓	✓	✓	✓	✓	✓

Pendants

Round 4 Claw Swing Bail



PB4C3

Size (mm)	S/S	9ct Y/G	9ct W/G	9ct R/G	Platinum	18ct Y/G	18ct W/G	18ct R/G
4	✓	✓						
5	✓	✓						
6	✓	✓						
7	✓	✓						

Flat Rail



PB4C4

Size (mm)	S/S	9ct Y/G	9ct W/G	9ct R/G	Platinum	18ct Y/G	18ct W/G	18ct R/G
3		✓	✓	✓	✓	✓	✓	✓
3.5		✓	✓	✓	✓	✓	✓	✓
4		✓	✓	✓	✓	✓	✓	✓
4.5		✓	✓	✓	✓	✓	✓	✓
5		✓	✓	✓	✓	✓	✓	✓
5.5		✓	✓	✓	✓	✓	✓	✓
6		✓	✓	✓	✓	✓	✓	✓
6.5		✓	✓	✓	✓	✓	✓	✓
7		✓	✓	✓	✓	✓	✓	✓
7.5		✓	✓	✓	✓	✓	✓	✓
8		✓	✓	✓	✓	✓	✓	✓
8.5		✓	✓	✓	✓	✓	✓	✓
9		✓	✓	✓	✓	✓	✓	✓

Round Rail



PB4C5

Size (mm)	S/S	9ct Y/G	9ct W/G	9ct R/G	Platinum	18ct Y/G	18ct W/G	18ct R/G
3		✓	✓	✓	✓	✓	✓	✓
3.5		✓	✓	✓	✓	✓	✓	✓
4		✓	✓	✓	✓	✓	✓	✓
4.5		✓	✓	✓	✓	✓	✓	✓
5		✓	✓	✓	✓	✓	✓	✓
5.5		✓	✓	✓	✓	✓	✓	✓
6		✓	✓	✓	✓	✓	✓	✓
6.5		✓	✓	✓	✓	✓	✓	✓
7		✓	✓	✓	✓	✓	✓	✓
7.5		✓	✓	✓	✓	✓	✓	✓
8		✓	✓	✓	✓	✓	✓	✓
8.5		✓	✓	✓	✓	✓	✓	✓
9		✓	✓	✓	✓	✓	✓	✓
10		✓	✓	✓	✓	✓	✓	✓

* All sizes can be created in either Light or Heavy variants

Round Rail Large Bail

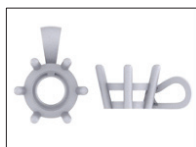


PB4C6

Size (mm)	S/S	9ct Y/G	9ct W/G	9ct R/G	Platinum	18ct Y/G	18ct W/G	18ct R/G
3		✓	✓	✓	✓	✓	✓	✓
3.5		✓	✓	✓	✓	✓	✓	✓
4		✓	✓	✓	✓	✓	✓	✓
4.5		✓	✓	✓	✓	✓	✓	✓
5		✓	✓	✓	✓	✓	✓	✓
5.5		✓	✓	✓	✓	✓	✓	✓
6		✓	✓	✓	✓	✓	✓	✓
6.5		✓	✓	✓	✓	✓	✓	✓
7		✓	✓	✓	✓	✓	✓	✓
7.5		✓	✓	✓	✓	✓	✓	✓
8		✓	✓	✓	✓	✓	✓	✓
8.5		✓	✓	✓	✓	✓	✓	✓
9		✓	✓	✓	✓	✓	✓	✓

Pendants

6 Claws Flat Rail



PB6C1

Size (mm)	S/S	9ct Y/G	9ct W/G	9ct R/G	Platinum	18ct Y/G	18ct W/G	18ct R/G
3		✓	✓	✓	✓	✓	✓	✓
3.5		✓	✓	✓	✓	✓	✓	✓
4		✓	✓	✓	✓	✓	✓	✓
4.5		✓	✓	✓	✓	✓	✓	✓
5		✓	✓	✓	✓	✓	✓	✓
5.5		✓	✓	✓	✓	✓	✓	✓
6		✓	✓	✓	✓	✓	✓	✓
6.5		✓	✓	✓	✓	✓	✓	✓
7		✓	✓	✓	✓	✓	✓	✓
7.5		✓	✓	✓	✓	✓	✓	✓
8		✓	✓	✓	✓	✓	✓	✓
8.5		✓	✓	✓	✓	✓	✓	✓

* All sizes can be created in either Light or Heavy variants

Brilliant Bezel

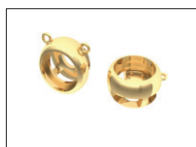


PBB1

Size (mm)	S/S	9ct Y/G	9ct W/G	9ct R/G	Platinum	18ct Y/G	18ct W/G	18ct R/G
2.5		✓	✓	✓	✓	✓	✓	✓
3		✓	✓	✓	✓	✓	✓	✓
3.5		✓	✓	✓	✓	✓	✓	✓
4		✓	✓	✓	✓	✓	✓	✓
4.5		✓	✓	✓	✓	✓	✓	✓
5		✓	✓	✓	✓	✓	✓	✓
5.5		✓	✓	✓	✓	✓	✓	✓
6		✓	✓	✓	✓	✓	✓	✓
6.5		✓	✓	✓	✓	✓	✓	✓
7		✓	✓	✓	✓	✓	✓	✓

* All sizes can be created in either Light or Heavy variants

Brilliant Double Bezel



PBB2

Size (mm)	S/S	9ct Y/G	9ct W/G	9ct R/G	Platinum	18ct Y/G	18ct W/G	18ct R/G
3.5		✓	✓	✓	✓	✓	✓	✓
4		✓	✓	✓	✓	✓	✓	✓
4.5		✓	✓	✓	✓	✓	✓	✓
5		✓	✓	✓	✓	✓	✓	✓
5.5		✓	✓	✓	✓	✓	✓	✓
6		✓	✓	✓	✓	✓	✓	✓
6.5		✓	✓	✓	✓	✓	✓	✓
7		✓	✓	✓	✓	✓	✓	✓
7.5		✓	✓	✓	✓	✓	✓	✓
8		✓	✓	✓	✓	✓	✓	✓
8.5		✓	✓	✓	✓	✓	✓	✓

Round Slider Pendant



PBB3

Size (mm)	S/S	9ct Y/G	9ct W/G	9ct R/G	Platinum	18ct Y/G	18ct W/G	18ct R/G
3.5		✓	✓	✓	✓	✓	✓	✓
4		✓	✓	✓	✓	✓	✓	✓
4.5		✓	✓	✓	✓	✓	✓	✓
5		✓	✓	✓	✓	✓	✓	✓
5.5		✓	✓	✓	✓	✓	✓	✓
6		✓	✓	✓	✓	✓	✓	✓
6.5		✓	✓	✓	✓	✓	✓	✓
7		✓	✓	✓	✓	✓	✓	✓
7.5		✓	✓	✓	✓	✓	✓	✓

Pendants

P4



PBB4

Size (mm)	S/S	9ct Y/G	9ct W/G	9ct R/G	Platinum	18ct Y/G	18ct W/G	18ct R/G
3.5		✓	✓	✓	✓	✓	✓	✓
4		✓	✓	✓	✓	✓	✓	✓
4.5		✓	✓	✓	✓	✓	✓	✓
5		✓	✓	✓	✓	✓	✓	✓
5.5		✓	✓	✓	✓	✓	✓	✓
6		✓	✓	✓	✓	✓	✓	✓
6.5		✓	✓	✓	✓	✓	✓	✓

Princess 4 Claw Fix Bail



PP4C1

Size (mm)	S/S	9ct Y/G	9ct W/G	9ct R/G	Platinum	18ct Y/G	18ct W/G	18ct R/G
2.5		✓	✓	✓	✓	✓	✓	✓
3.5		✓	✓	✓	✓	✓	✓	✓
4		✓	✓	✓	✓	✓	✓	✓
4.5		✓	✓	✓	✓	✓	✓	✓
5		✓	✓	✓	✓	✓	✓	✓
5.5		✓	✓	✓	✓	✓	✓	✓
6		✓	✓	✓	✓	✓	✓	✓
6.5		✓	✓	✓	✓	✓	✓	✓

Bail



PB1

Size (mm)	S/S	9ct Y/G	9ct W/G	9ct R/G	Platinum	18ct Y/G	18ct W/G	18ct R/G
7 x 4	✓	✓	✓	✓		✓	✓	
7.2 x 6	✓	✓	✓	✓		✓	✓	

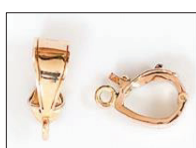
Enhancer HK



PB2

Size (mm)	S/S	9ct Y/G	9ct W/G	9ct R/G	Platinum	18ct Y/G	18ct W/G	18ct R/G
13 x 3.5			✓				✓	

Enhancer



PB3

Size (mm)	S/S	9ct Y/G	9ct W/G	9ct R/G	Platinum	18ct Y/G	18ct W/G	18ct R/G
13 x 4.4		✓	✓	✓	✓	✓	✓	✓
15.8 x 6.4		✓	✓	✓	✓	✓	✓	✓

Enhancer



PB4

Size (mm)	S/S	9ct Y/G	9ct W/G	9ct R/G	Platinum	18ct Y/G	18ct W/G	18ct R/G
14.8 x 6.4		✓	✓	✓	✓	✓	✓	✓

Pendants

Enhancer + Jumping



PB7

Size (mm)	S/S	9ct Y/G	9ct W/G	9ct R/G	Platinum	18ct Y/G	18ct W/G	18ct R/G
13.7 x 2.9	✓	✓	✓	✓	✓	✓	✓	✓
15.5 x 3.2	✓	✓	✓	✓	✓	✓	✓	✓

Enhancer PK



PB8

Size (mm)	S/S	9ct Y/G	9ct W/G	9ct R/G	Platinum	18ct Y/G	18ct W/G	18ct R/G
10 x 2.3		✓	✓					
13 x 2.6		✓	✓			✓		

Bail



PB9

Size (mm)	S/S	9ct Y/G	9ct W/G	9ct R/G	Platinum	18ct Y/G	18ct W/G	18ct R/G
8.3 x 3		✓	✓	✓	✓	✓	✓	✓
9.5 x 3.2		✓	✓	✓	✓	✓	✓	✓

Bail



PB9A

Size (mm)	S/S	9ct Y/G	9ct W/G	9ct R/G	Platinum	18ct Y/G	18ct W/G	18ct R/G
6.8 x 4		✓	✓	✓	✓	✓	✓	✓
8.2 x 4		✓	✓	✓	✓	✓	✓	✓
9.3 x 6.2		✓	✓	✓	✓	✓	✓	✓

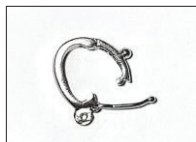
Pendant



PB10

Size (mm)	S/S	9ct Y/G	9ct W/G	9ct R/G	Platinum	18ct Y/G	18ct W/G	18ct R/G
11.4 x 5.4		✓	✓	✓	✓	✓	✓	✓
16.8 x 6.5		✓	✓	✓	✓	✓	✓	✓

Pendant



PB11

Size (mm)	S/S	9ct Y/G	9ct W/G	9ct R/G	Platinum	18ct Y/G	18ct W/G	18ct R/G
12 x 3.15		✓	✓	✓		✓	✓	✓

Pendants

Bail

PB12



Size (mm)	S/S	9ct Y/G	9ct W/G	9ct R/G	Platinum	18ct Y/G	18ct W/G	18ct R/G
S		✓	✓	✓	✓	✓	✓	✓
M		✓	✓	✓	✓	✓	✓	✓
L		✓	✓	✓	✓	✓	✓	✓

Pendant

PB14



Size (mm)	S/S	9ct Y/G	9ct W/G	9ct R/G	Platinum	18ct Y/G	18ct W/G	18ct R/G
HANPL15		✓	✓					
HANPEG		✓	✓					

Pearl Cup Fluted

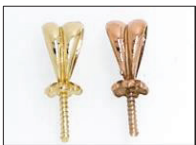
PPE1



Size (mm)	S/S	9ct Y/G	9ct W/G	9ct R/G	Platinum	18ct Y/G	18ct W/G	18ct R/G
3	✓	✓	✓	✓		✓	✓	
5	✓	✓	✓			✓	✓	
6	✓	✓	✓			✓	✓	
8	✓	✓	✓			✓	✓	

Pearl Pendant (6.5 x 4.9 bail)

PPE3



Size (mm)	S/S	9ct Y/G	9ct W/G	9ct R/G	Platinum	18ct Y/G	18ct W/G	18ct R/G
4.5		✓	✓	✓	✓	✓	✓	✓

Pendant (7 x 5 bail)

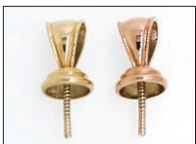
PPE4



Size (mm)	S/S	9ct Y/G	9ct W/G	9ct R/G	Platinum	18ct Y/G	18ct W/G	18ct R/G
7		✓	✓	✓	✓	✓	✓	✓

Pendant (7.7 x 3.4 bail)

PPE4



Size (mm)	S/S	9ct Y/G	9ct W/G	9ct R/G	Platinum	18ct Y/G	18ct W/G	18ct R/G
6		✓	✓	✓	✓	✓	✓	✓

Pendants

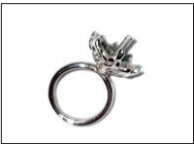
Pearl Cup (8.6 ring)



PPE7

Size (mm)	S/S	9ct Y/G	9ct W/G	9ct R/G	Platinum	18ct Y/G	18ct W/G	18ct R/G
5		✓	✓	✓	✓	✓	✓	✓

Pendant



PPE8

Size (mm)	S/S	9ct Y/G	9ct W/G	9ct R/G	Platinum	18ct Y/G	18ct W/G	18ct R/G
8						✓	✓	

Bell Drop



PPE9

Size (mm)	S/S	9ct Y/G	9ct W/G	9ct R/G	Platinum	18ct Y/G	18ct W/G	18ct R/G
3.5		✓	✓	✓		✓	✓	
5		✓	✓	✓		✓	✓	

Bell Drop



PPE9A

Size (mm)	S/S	9ct Y/G	9ct W/G	9ct R/G	Platinum	18ct Y/G	18ct W/G	18ct R/G
3.5		✓	✓	✓		✓	✓	
5		✓	✓	✓		✓	✓	

Fine (9.5 pin)



PPE11

Size (mm)	S/S	9ct Y/G	9ct W/G	9ct R/G	Platinum	18ct Y/G	18ct W/G	18ct R/G
3			✓			✓	✓	

Pearl Drop & Bail



PPE12

Size (mm)	S/S	9ct Y/G	9ct W/G	9ct R/G	Platinum	18ct Y/G	18ct W/G	18ct R/G
3	✓	✓	✓	✓	✓	✓	✓	✓
5	✓	✓	✓	✓	✓	✓	✓	✓
6	✓	✓	✓	✓	✓	✓	✓	✓
8	✓	✓	✓	✓	✓	✓	✓	✓

Pendants

Pendant

PPE13



Size (mm)	S/S	9ct Y/G	9ct W/G	9ct R/G	Platinum	18ct Y/G	18ct W/G	18ct R/G
6.3		✓	✓	✓	✓	✓	✓	✓

Pendant

PPE15



Size (mm)	S/S	9ct Y/G	9ct W/G	9ct R/G	Platinum	18ct Y/G	18ct W/G	18ct R/G
0						✓	✓	✓

Pearl Pendant

PPE16



Size (mm)	S/S	9ct Y/G	9ct W/G	9ct R/G	Platinum	18ct Y/G	18ct W/G	18ct R/G
15						✓	✓	✓

Sovereign

P1



Size (mm)	S/S	9ct Y/G	9ct W/G	9ct R/G	Platinum	18ct Y/G	18ct W/G	18ct R/G
19		✓	✓	✓	✓	✓	✓	✓
22		✓	✓	✓	✓	✓	✓	✓

Pendant

P2



Size (mm)	S/S	9ct Y/G	9ct W/G	9ct R/G	Platinum	18ct Y/G	18ct W/G	18ct R/G
13 x 18	✓							
18 x 25	✓							

Settings

Princess Bezel Open

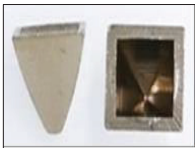
SPB1



Size (mm)	S/S	9ct Y/G	9ct W/G	9ct R/G	Platinum	18ct Y/G	18ct W/G	18ct R/G
3.5		✓	✓	✓	✓	✓	✓	✓
4		✓	✓	✓	✓	✓	✓	✓
4.5		✓	✓	✓	✓	✓	✓	✓
5		✓	✓	✓	✓	✓	✓	✓
5.5		✓	✓	✓	✓	✓	✓	✓
6		✓	✓	✓	✓	✓	✓	✓
6.5		✓	✓	✓	✓	✓	✓	✓
7		✓	✓	✓	✓	✓	✓	✓

Princess Bezel Closed

SPB2



Size (mm)	S/S	9ct Y/G	9ct W/G	9ct R/G	Platinum	18ct Y/G	18ct W/G	18ct R/G
2.5		✓	✓	✓	✓	✓	✓	✓
3		✓	✓	✓	✓	✓	✓	✓
3.5		✓	✓	✓	✓	✓	✓	✓
4		✓	✓	✓	✓	✓	✓	✓
4.5		✓	✓	✓	✓	✓	✓	✓
5		✓	✓	✓	✓	✓	✓	✓
5.5		✓	✓	✓	✓	✓	✓	✓
6		✓	✓	✓	✓	✓	✓	✓
6.5		✓	✓	✓	✓	✓	✓	✓

Princess Bezel Heavy

SPB3



Size (mm)	S/S	9ct Y/G	9ct W/G	9ct R/G	Platinum	18ct Y/G	18ct W/G	18ct R/G
3.5		✓	✓	✓	✓	✓	✓	✓
4		✓	✓	✓	✓	✓	✓	✓
4.5		✓	✓	✓	✓	✓	✓	✓
4.7		✓	✓	✓	✓	✓	✓	✓
5		✓	✓	✓	✓	✓	✓	✓
5.5		✓	✓	✓	✓	✓	✓	✓
6		✓	✓	✓	✓	✓	✓	✓
6.5		✓	✓	✓	✓	✓	✓	✓

Oval Bezel

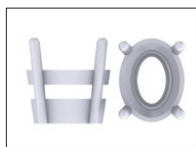
SOB1



Size (mm)	S/S	9ct Y/G	9ct W/G	9ct R/G	Platinum	18ct Y/G	18ct W/G	18ct R/G
5 x 3		✓	✓	✓	✓	✓	✓	✓
6 x 4		✓	✓	✓	✓	✓	✓	✓
7 x 5		✓	✓	✓	✓	✓	✓	✓
8 x 6		✓	✓	✓	✓	✓	✓	✓
9 x 7		✓	✓	✓	✓	✓	✓	✓
10 x 8		✓	✓	✓	✓	✓	✓	✓
12 x 10		✓	✓	✓	✓	✓	✓	✓

Settings

Oval 4 Claws



SO4C1

Size (mm)	S/S	9ct Y/G	9ct W/G	9ct R/G	Platinum	18ct Y/G	18ct W/G	18ct R/G
5 x 3		✓	✓	✓	✓	✓	✓	✓
6 x 4		✓	✓	✓	✓	✓	✓	✓
7 x 5		✓	✓	✓	✓	✓	✓	✓
8 x 6		✓	✓	✓	✓	✓	✓	✓
9 x 7		✓	✓	✓	✓	✓	✓	✓
10 x 8		✓	✓	✓	✓	✓	✓	✓
12 x 10		✓	✓	✓	✓	✓	✓	✓
5 x 3		✓	✓	✓	✓	✓	✓	✓
6 x 4		✓	✓	✓	✓	✓	✓	✓
7 x 5		✓	✓	✓	✓	✓	✓	✓
8 x 6		✓	✓	✓	✓	✓	✓	✓
9 x 7		✓	✓	✓	✓	✓	✓	✓
10 x 8		✓	✓	✓	✓	✓	✓	✓
12 x 10		✓	✓	✓	✓	✓	✓	✓

Oval 4 Claws



SO4C2

Size (mm)	S/S	9ct Y/G	9ct W/G	9ct R/G	Platinum	18ct Y/G	18ct W/G	18ct R/G
5 x 3		✓	✓	✓	✓	✓	✓	✓
6 x 4		✓	✓	✓	✓	✓	✓	✓
7 x 5		✓	✓	✓	✓	✓	✓	✓
8 x 6		✓	✓	✓	✓	✓	✓	✓
9 x 7		✓	✓	✓	✓	✓	✓	✓
10 x 8		✓	✓	✓	✓	✓	✓	✓
11 x 9		✓	✓	✓	✓	✓	✓	✓
12 x 10		✓	✓	✓	✓	✓	✓	✓

Square Emerald Bezel



SSEB1

Size (mm)	S/S	9ct Y/G	9ct W/G	9ct R/G	Platinum	18ct Y/G	18ct W/G	18ct R/G
3.5		✓	✓	✓	✓	✓	✓	✓
4		✓	✓	✓	✓	✓	✓	✓
4.5		✓	✓	✓	✓	✓	✓	✓
5		✓	✓	✓	✓	✓	✓	✓
5.5		✓	✓	✓	✓	✓	✓	✓
6		✓	✓	✓	✓	✓	✓	✓
6.5		✓	✓	✓	✓	✓	✓	✓
7		✓	✓	✓	✓	✓	✓	✓

Brilliant Bezel



SBB1

Size (mm)	S/S	9ct Y/G	9ct W/G	9ct R/G	Platinum	18ct Y/G	18ct W/G	18ct R/G
2.5		✓	✓	✓	✓	✓	✓	✓
3		✓	✓	✓	✓	✓	✓	✓
3.5		✓	✓	✓	✓	✓	✓	✓
4		✓	✓	✓	✓	✓	✓	✓
4.5		✓	✓	✓	✓	✓	✓	✓
5		✓	✓	✓	✓	✓	✓	✓
5.5		✓	✓	✓	✓	✓	✓	✓
6		✓	✓	✓	✓	✓	✓	✓
6.5		✓	✓	✓	✓	✓	✓	✓
7		✓	✓	✓	✓	✓	✓	✓
7.5		✓	✓	✓	✓	✓	✓	✓
8		✓	✓	✓	✓	✓	✓	✓

* All sizes can be created in either Light or Heavy variants

Settings

Brilliant Bezel Cone

SBB2



Size (mm)	S/S	9ct Y/G	9ct W/G	9ct R/G	Platinum	18ct Y/G	18ct W/G	18ct R/G
2		✓	✓	✓	✓	✓	✓	✓
2.4		✓	✓	✓	✓	✓	✓	✓
2.7		✓	✓	✓	✓	✓	✓	✓
3		✓	✓	✓	✓	✓	✓	✓
3.4		✓	✓	✓	✓	✓	✓	✓
3.7		✓	✓	✓	✓	✓	✓	✓
4		✓	✓	✓	✓	✓	✓	✓
4.4		✓	✓	✓	✓	✓	✓	✓
4.7		✓	✓	✓	✓	✓	✓	✓
5		✓	✓	✓	✓	✓	✓	✓
5.4		✓	✓	✓	✓	✓	✓	✓
6		✓	✓	✓	✓	✓	✓	✓
6.5		✓	✓	✓	✓	✓	✓	✓
7		✓	✓	✓	✓	✓	✓	✓

Brilliant Bezel Open

SBB3



Size (mm)	S/S	9ct Y/G	9ct W/G	9ct R/G	Platinum	18ct Y/G	18ct W/G	18ct R/G
5.5		✓	✓	✓	✓	✓	✓	✓
6.5		✓	✓	✓	✓	✓	✓	✓

No Rail Curve

SP4C1



Size (mm)	S/S	9ct Y/G	9ct W/G	9ct R/G	Platinum	18ct Y/G	18ct W/G	18ct R/G
3.5		✓	✓	✓	✓	✓	✓	✓
4		✓	✓	✓	✓	✓	✓	✓
4.5		✓	✓	✓	✓	✓	✓	✓
5		✓	✓	✓	✓	✓	✓	✓
5.5		✓	✓	✓	✓	✓	✓	✓
6		✓	✓	✓	✓	✓	✓	✓
6.5		✓	✓	✓	✓	✓	✓	✓
7		✓	✓	✓	✓	✓	✓	✓
8		✓	✓	✓	✓	✓	✓	✓

Straight With Rail

SP4C2



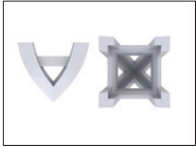
Size (mm)	S/S	9ct Y/G	9ct W/G	9ct R/G	Platinum	18ct Y/G	18ct W/G	18ct R/G
3		✓	✓	✓	✓	✓	✓	✓
3.5		✓	✓	✓	✓	✓	✓	✓
4		✓	✓	✓	✓	✓	✓	✓
4.5		✓	✓	✓	✓	✓	✓	✓
5		✓	✓	✓	✓	✓	✓	✓
5.5		✓	✓	✓	✓	✓	✓	✓
6		✓	✓	✓	✓	✓	✓	✓
6.5		✓	✓	✓	✓	✓	✓	✓
7		✓	✓	✓	✓	✓	✓	✓
7.5		✓	✓	✓	✓	✓	✓	✓
8		✓	✓	✓	✓	✓	✓	✓

* All sizes can be created in either Light or Heavy variants

Settings

Princess Low Setting

SP4C3



Size (mm)	S/S	9ct Y/G	9ct W/G	9ct R/G	Platinum	18ct Y/G	18ct W/G	18ct R/G
3.5		✓	✓	✓	✓	✓	✓	✓
4		✓	✓	✓	✓	✓	✓	✓
4.5		✓	✓	✓	✓	✓	✓	✓
5		✓	✓	✓	✓	✓	✓	✓
5.5		✓	✓	✓	✓	✓	✓	✓
6		✓	✓	✓	✓	✓	✓	✓
6.5		✓	✓	✓	✓	✓	✓	✓
7		✓	✓	✓	✓	✓	✓	✓

Novo Tiffany

SP4C5



Size (mm)	S/S	9ct Y/G	9ct W/G	9ct R/G	Platinum	18ct Y/G	18ct W/G	18ct R/G
3.5		✓	✓	✓	✓	✓	✓	✓
4		✓	✓	✓	✓	✓	✓	✓
4.5		✓	✓	✓	✓	✓	✓	✓
5		✓	✓	✓	✓	✓	✓	✓
5.5		✓	✓	✓	✓	✓	✓	✓
6		✓	✓	✓	✓	✓	✓	✓
6.5		✓	✓	✓	✓	✓	✓	✓
7		✓	✓	✓	✓	✓	✓	✓
7.5		✓	✓	✓	✓	✓	✓	✓

A1 Low

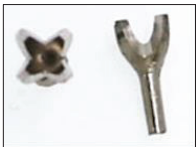
SB4C1



Size (mm)	S/S	9ct Y/G	9ct W/G	9ct R/G	Platinum	18ct Y/G	18ct W/G	18ct R/G
2.4							✓	
2.7							✓	
3							✓	
3.2							✓	
3.7							✓	
4.1							✓	
4.4							✓	
4.6							✓	
5.2							✓	
5.5							✓	
5.8							✓	
6.5							✓	
7.4							✓	

W4

SB4C2



Size (mm)	S/S	9ct Y/G	9ct W/G	9ct R/G	Platinum	18ct Y/G	18ct W/G	18ct R/G
1.5			✓			✓	✓	
1.8			✓			✓	✓	
2			✓			✓	✓	
2.3			✓			✓	✓	
2.5			✓			✓	✓	
2.8			✓			✓	✓	
3			✓			✓	✓	

Settings

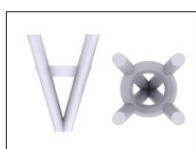
TY 4 Claw



SB4C3

Size (mm)	S/S	9ct Y/G	9ct W/G	9ct R/G	Platinum	18ct Y/G	18ct W/G	18ct R/G
3.5		✓	✓	✓	✓	✓	✓	✓
4		✓	✓	✓	✓	✓	✓	✓
4.5		✓	✓	✓	✓	✓	✓	✓
5		✓	✓	✓	✓	✓	✓	✓
5.5		✓	✓	✓	✓	✓	✓	✓
6		✓	✓	✓	✓	✓	✓	✓
6.5		✓	✓	✓	✓	✓	✓	✓
7		✓	✓	✓	✓	✓	✓	✓
7.5		✓	✓	✓	✓	✓	✓	✓
8		✓	✓	✓	✓	✓	✓	✓
8.5		✓	✓	✓	✓	✓	✓	✓
9		✓	✓	✓	✓	✓	✓	✓
9.5		✓	✓	✓	✓	✓	✓	✓
10		✓	✓	✓	✓	✓	✓	✓

Round Wire



SB4C4

Size (mm)	S/S	9ct Y/G	9ct W/G	9ct R/G	Platinum	18ct Y/G	18ct W/G	18ct R/G
3		✓	✓	✓	✓	✓	✓	✓
3.5		✓	✓	✓	✓	✓	✓	✓
4		✓	✓	✓	✓	✓	✓	✓
4.5		✓	✓	✓	✓	✓	✓	✓
5		✓	✓	✓	✓	✓	✓	✓
5.5		✓	✓	✓	✓	✓	✓	✓
6		✓	✓	✓	✓	✓	✓	✓
6.5		✓	✓	✓	✓	✓	✓	✓
7		✓	✓	✓	✓	✓	✓	✓
7.5		✓	✓	✓	✓	✓	✓	✓
8		✓	✓	✓	✓	✓	✓	✓
8.5		✓	✓	✓	✓	✓	✓	✓
9		✓	✓	✓	✓	✓	✓	✓

* All sizes can be created in either Light or Heavy variants

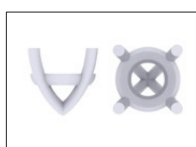
4T



SB4C5

Size (mm)	S/S	9ct Y/G	9ct W/G	9ct R/G	Platinum	18ct Y/G	18ct W/G	18ct R/G
4		✓	✓	✓	✓	✓	✓	✓
4.5		✓	✓	✓	✓	✓	✓	✓
5		✓	✓	✓	✓	✓	✓	✓
5.5		✓	✓	✓	✓	✓	✓	✓

Curved Claws Low



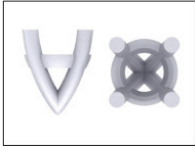
SB4C6

Size (mm)	S/S	9ct Y/G	9ct W/G	9ct R/G	Platinum	18ct Y/G	18ct W/G	18ct R/G
3		✓	✓	✓	✓	✓	✓	✓
3.5		✓	✓	✓	✓	✓	✓	✓
4		✓	✓	✓	✓	✓	✓	✓
4.5		✓	✓	✓	✓	✓	✓	✓
5		✓	✓	✓	✓	✓	✓	✓
5.5		✓	✓	✓	✓	✓	✓	✓
6		✓	✓	✓	✓	✓	✓	✓
6.5		✓	✓	✓	✓	✓	✓	✓
7		✓	✓	✓	✓	✓	✓	✓
7.5		✓	✓	✓	✓	✓	✓	✓
8		✓	✓	✓	✓	✓	✓	✓
8.5		✓	✓	✓	✓	✓	✓	✓
9		✓	✓	✓	✓	✓	✓	✓

Settings

Curved Claws High

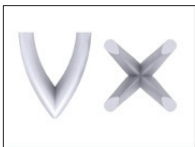
SB4C7



Size (mm)	S/S	9ct Y/G	9ct W/G	9ct R/G	Platinum	18ct Y/G	18ct W/G	18ct R/G
3		✓	✓	✓	✓	✓	✓	✓
3.5		✓	✓	✓	✓	✓	✓	✓
4		✓	✓	✓	✓	✓	✓	✓
4.5		✓	✓	✓	✓	✓	✓	✓
5		✓	✓	✓	✓	✓	✓	✓
5.5		✓	✓	✓	✓	✓	✓	✓
6		✓	✓	✓	✓	✓	✓	✓
6.5		✓	✓	✓	✓	✓	✓	✓
7		✓	✓	✓	✓	✓	✓	✓
7.5		✓	✓	✓	✓	✓	✓	✓
8		✓	✓	✓	✓	✓	✓	✓

Curved Claws No Rail

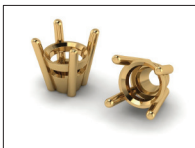
SB4C8



Size (mm)	S/S	9ct Y/G	9ct W/G	9ct R/G	Platinum	18ct Y/G	18ct W/G	18ct R/G
4		✓	✓	✓	✓	✓	✓	✓
4.5		✓	✓	✓	✓	✓	✓	✓
5		✓	✓	✓	✓	✓	✓	✓
5.5		✓	✓	✓	✓	✓	✓	✓
6		✓	✓	✓	✓	✓	✓	✓
6.5		✓	✓	✓	✓	✓	✓	✓
7		✓	✓	✓	✓	✓	✓	✓
7.5		✓	✓	✓	✓	✓	✓	✓
8		✓	✓	✓	✓	✓	✓	✓

OS4

SB4C10



Size (mm)	S/S	9ct Y/G	9ct W/G	9ct R/G	Platinum	18ct Y/G	18ct W/G	18ct R/G
2.5		✓	✓	✓	✓	✓	✓	✓
3		✓	✓	✓	✓	✓	✓	✓
3.5		✓	✓	✓	✓	✓	✓	✓
4		✓	✓	✓	✓	✓	✓	✓
4.5		✓	✓	✓	✓	✓	✓	✓
5		✓	✓	✓	✓	✓	✓	✓
5.5		✓	✓	✓	✓	✓	✓	✓
6		✓	✓	✓	✓	✓	✓	✓
6.5		✓	✓	✓	✓	✓	✓	✓
7		✓	✓	✓	✓	✓	✓	✓
7.5		✓	✓	✓	✓	✓	✓	✓
8		✓	✓	✓	✓	✓	✓	✓
8.5		✓	✓	✓	✓	✓	✓	✓
9		✓	✓	✓	✓	✓	✓	✓

* All sizes can be created in either Light or Heavy variants

High

SB4C11



Size (mm)	S/S	9ct Y/G	9ct W/G	9ct R/G	Platinum	18ct Y/G	18ct W/G	18ct R/G
3.7							✓	
4							✓	
4.5							✓	
5							✓	
5.5							✓	
6.5							✓	
7							✓	
7.5							✓	

Settings

SM4

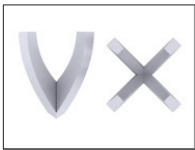
SB4C12



Size (mm)	S/S	9ct Y/G	9ct W/G	9ct R/G	Platinum	18ct Y/G	18ct W/G	18ct R/G
2		✓	✓	✓	✓	✓	✓	✓
2.5		✓	✓	✓	✓	✓	✓	✓
3		✓	✓	✓	✓	✓	✓	✓
3.5		✓	✓	✓	✓	✓	✓	✓

Square Claws

SB4C13



Size (mm)	S/S	9ct Y/G	9ct W/G	9ct R/G	Platinum	18ct Y/G	18ct W/G	18ct R/G
4		✓	✓	✓	✓	✓	✓	✓
4.5		✓	✓	✓	✓	✓	✓	✓
5		✓	✓	✓	✓	✓	✓	✓
5.5		✓	✓	✓	✓	✓	✓	✓
6		✓	✓	✓	✓	✓	✓	✓
6.5		✓	✓	✓	✓	✓	✓	✓
7		✓	✓	✓	✓	✓	✓	✓
7.5		✓	✓	✓	✓	✓	✓	✓
8		✓	✓	✓	✓	✓	✓	✓

P6 Low

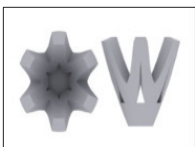
SB6C1



Size (mm)	S/S	9ct Y/G	9ct W/G	9ct R/G	Platinum	18ct Y/G	18ct W/G	18ct R/G
3							✓	
3.2							✓	
3.7							✓	
4.1							✓	
4.6							✓	
5.2							✓	
5.5							✓	
5.8							✓	
6.5					✓		✓	
7					✓		✓	
7.5							✓	
8					✓			
8.5							✓	
9							✓	

Crown

SB6C2



Size (mm)	S/S	9ct Y/G	9ct W/G	9ct R/G	Platinum	18ct Y/G	18ct W/G	18ct R/G
3.4		✓	✓	✓	✓	✓	✓	✓
4		✓	✓	✓	✓	✓	✓	✓
4.5		✓	✓	✓	✓	✓	✓	✓
5		✓	✓	✓	✓	✓	✓	✓
5.5		✓	✓	✓	✓	✓	✓	✓
6		✓	✓	✓	✓	✓	✓	✓
6.5		✓	✓	✓	✓	✓	✓	✓
7		✓	✓	✓	✓	✓	✓	✓

Settings

TY 6 Claw

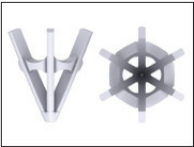
SB6C3



Size (mm)	S/S	9ct Y/G	9ct W/G	9ct R/G	Platinum	18ct Y/G	18ct W/G	18ct R/G
4		✓	✓	✓	✓	✓	✓	✓
4.5		✓	✓	✓	✓	✓	✓	✓
5		✓	✓	✓	✓	✓	✓	✓
5.5		✓	✓	✓	✓	✓	✓	✓
6		✓	✓	✓	✓	✓	✓	✓
6.5		✓	✓	✓	✓	✓	✓	✓
7		✓	✓	✓	✓	✓	✓	✓
7.5		✓	✓	✓	✓	✓	✓	✓
8		✓	✓	✓	✓	✓	✓	✓
8.5		✓	✓	✓	✓	✓	✓	✓
9		✓	✓	✓	✓	✓	✓	✓
9.5		✓	✓	✓	✓	✓	✓	✓
10		✓	✓	✓	✓	✓	✓	✓

M6

SB6C4



Size (mm)	S/S	9ct Y/G	9ct W/G	9ct R/G	Platinum	18ct Y/G	18ct W/G	18ct R/G
3		✓	✓	✓	✓	✓	✓	✓
3.5		✓	✓	✓	✓	✓	✓	✓
4		✓	✓	✓	✓	✓	✓	✓
4.5		✓	✓	✓	✓	✓	✓	✓
5		✓	✓	✓	✓	✓	✓	✓
5.5		✓	✓	✓	✓	✓	✓	✓
6		✓	✓	✓	✓	✓	✓	✓
6.5		✓	✓	✓	✓	✓	✓	✓
7		✓	✓	✓	✓	✓	✓	✓
7.5		✓	✓	✓	✓	✓	✓	✓
8		✓	✓	✓	✓	✓	✓	✓

WS6

SB6C5



Size (mm)	S/S	9ct Y/G	9ct W/G	9ct R/G	Platinum	18ct Y/G	18ct W/G	18ct R/G
4		✓	✓	✓	✓	✓	✓	✓
4.5		✓	✓	✓	✓	✓	✓	✓
5		✓	✓	✓	✓	✓	✓	✓
5.5		✓	✓	✓	✓	✓	✓	✓
6		✓	✓	✓	✓	✓	✓	✓
6.5		✓	✓	✓	✓	✓	✓	✓
7		✓	✓	✓	✓	✓	✓	✓
7.5		✓	✓	✓	✓	✓	✓	✓
8		✓	✓	✓	✓	✓	✓	✓
8.5		✓	✓	✓	✓	✓	✓	✓
9		✓	✓	✓	✓	✓	✓	✓

Settings

R6

SB6C6



Size (mm)	S/S	9ct Y/G	9ct W/G	9ct R/G	Platinum	18ct Y/G	18ct W/G	18ct R/G
2.4		✓	✓	✓	✓	✓	✓	✓
2.7		✓	✓	✓	✓	✓	✓	✓
3		✓	✓	✓	✓	✓	✓	✓
3.5		✓	✓	✓	✓	✓	✓	✓
3.7		✓	✓	✓	✓	✓	✓	✓
4		✓	✓	✓	✓	✓	✓	✓
4.5		✓	✓	✓	✓	✓	✓	✓
4.7		✓	✓	✓	✓	✓	✓	✓
5		✓	✓	✓	✓	✓	✓	✓
5.5		✓	✓	✓	✓	✓	✓	✓
6		✓	✓	✓	✓	✓	✓	✓
6.5		✓	✓	✓	✓	✓	✓	✓
7		✓	✓	✓	✓	✓	✓	✓
7.5		✓	✓	✓	✓	✓	✓	✓
8		✓	✓	✓	✓	✓	✓	✓
8.5		✓	✓	✓	✓	✓	✓	✓

C6

SB6C7



Size (mm)	S/S	9ct Y/G	9ct W/G	9ct R/G	Platinum	18ct Y/G	18ct W/G	18ct R/G
4		✓	✓	✓	✓	✓	✓	✓
4.5		✓	✓	✓	✓	✓	✓	✓
5		✓	✓	✓	✓	✓	✓	✓
5.5		✓	✓	✓	✓	✓	✓	✓
6		✓	✓	✓	✓	✓	✓	✓
6.5		✓	✓	✓	✓	✓	✓	✓
7		✓	✓	✓	✓	✓	✓	✓
7.5		✓	✓	✓	✓	✓	✓	✓
8		✓	✓	✓	✓	✓	✓	✓

Y6

SB6C8



Size (mm)	S/S	9ct Y/G	9ct W/G	9ct R/G	Platinum	18ct Y/G	18ct W/G	18ct R/G
2.4			✓					
2.7			✓					
3			✓			✓		
3.5			✓					
3.7			✓					
4			✓					
4.4			✓			✓		
4.7			✓					
5			✓					

Settings

T6

SB6C10



Size (mm)	S/S	9ct Y/G	9ct W/G	9ct R/G	Platinum	18ct Y/G	18ct W/G	18ct R/G
2		✓	✓	✓	✓	✓	✓	✓
2.4		✓	✓	✓	✓	✓	✓	✓
2.7		✓	✓	✓	✓	✓	✓	✓
3		✓	✓	✓	✓	✓	✓	✓
3.4		✓	✓	✓	✓	✓	✓	✓
3.7		✓	✓	✓	✓	✓	✓	✓
4		✓	✓	✓	✓	✓	✓	✓
4.5		✓	✓	✓	✓	✓	✓	✓
4.7		✓	✓	✓	✓	✓	✓	✓
5		✓	✓	✓	✓	✓	✓	✓
5.4		✓	✓	✓	✓	✓	✓	✓
5.7		✓	✓	✓	✓	✓	✓	✓
6		✓	✓	✓	✓	✓	✓	✓
6.4		✓	✓	✓	✓	✓	✓	✓
6.7		✓	✓	✓	✓	✓	✓	✓
7		✓	✓	✓	✓	✓	✓	✓
7.5		✓	✓	✓	✓	✓	✓	✓
8.3		✓	✓	✓	✓	✓	✓	✓

B6

SB6C12



Size (mm)	S/S	9ct Y/G	9ct W/G	9ct R/G	Platinum	18ct Y/G	18ct W/G	18ct R/G
2		✓	✓	✓	✓	✓	✓	✓
2.4		✓	✓	✓	✓	✓	✓	✓
2.5		✓	✓	✓	✓	✓	✓	✓
2.7		✓	✓	✓	✓	✓	✓	✓
3		✓	✓	✓	✓	✓	✓	✓
3.5		✓	✓	✓	✓	✓	✓	✓
3.7		✓	✓	✓	✓	✓	✓	✓
4		✓	✓	✓	✓	✓	✓	✓
4.4		✓	✓	✓	✓	✓	✓	✓
4.5		✓	✓	✓	✓	✓	✓	✓
4.7		✓	✓	✓	✓	✓	✓	✓
5		✓	✓	✓	✓	✓	✓	✓
5.5		✓	✓	✓	✓	✓	✓	✓
5.7		✓	✓	✓	✓	✓	✓	✓
6		✓	✓	✓	✓	✓	✓	✓
6.5		✓	✓	✓	✓	✓	✓	✓
6.7		✓	✓	✓	✓	✓	✓	✓
7		✓	✓	✓	✓	✓	✓	✓
7.5		✓	✓	✓	✓	✓	✓	✓
8		✓	✓	✓	✓	✓	✓	✓
8.5		✓	✓	✓	✓	✓	✓	✓
9		✓	✓	✓	✓	✓	✓	✓

* All sizes can be created in either Light or Heavy variants

Settings

PD6

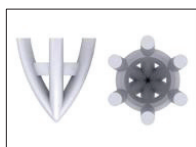
SB6C13



Size (mm)	S/S	9ct Y/G	9ct W/G	9ct R/G	Platinum	18ct Y/G	18ct W/G	18ct R/G
2.4					✓		✓	
2.7					✓		✓	
3					✓		✓	
3.2					✓		✓	
3.7					✓		✓	
4.1					✓		✓	
4.4					✓		✓	
4.6					✓		✓	
5.2					✓		✓	
6					✓		✓	
6.5					✓		✓	
7					✓		✓	
7.5					✓		✓	
8					✓		✓	
8.5					✓		✓	

High

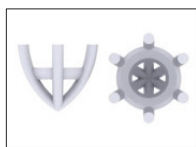
SB6C14



Size (mm)	S/S	9ct Y/G	9ct W/G	9ct R/G	Platinum	18ct Y/G	18ct W/G	18ct R/G
4		✓	✓	✓	✓	✓	✓	✓
4.5		✓	✓	✓	✓	✓	✓	✓
5		✓	✓	✓	✓	✓	✓	✓
5.5		✓	✓	✓	✓	✓	✓	✓
6		✓	✓	✓	✓	✓	✓	✓
6.5		✓	✓	✓	✓	✓	✓	✓
7		✓	✓	✓	✓	✓	✓	✓
7.5		✓	✓	✓	✓	✓	✓	✓
8		✓	✓	✓	✓	✓	✓	✓

Low

SB6C15



Size (mm)	S/S	9ct Y/G	9ct W/G	9ct R/G	Platinum	18ct Y/G	18ct W/G	18ct R/G
3.5		✓	✓	✓	✓	✓	✓	✓
4		✓	✓	✓	✓	✓	✓	✓
4.5		✓	✓	✓	✓	✓	✓	✓
5		✓	✓	✓	✓	✓	✓	✓
5.5		✓	✓	✓	✓	✓	✓	✓
6		✓	✓	✓	✓	✓	✓	✓
6.5		✓	✓	✓	✓	✓	✓	✓
7		✓	✓	✓	✓	✓	✓	✓
7.5		✓	✓	✓	✓	✓	✓	✓
8		✓	✓	✓	✓	✓	✓	✓
8.5		✓	✓	✓	✓	✓	✓	✓
9		✓	✓	✓	✓	✓	✓	✓

P6

SB6C16



Size (mm)	S/S	9ct Y/G	9ct W/G	9ct R/G	Platinum	18ct Y/G	18ct W/G	18ct R/G
4					✓		✓	
4.5					✓		✓	
5					✓		✓	
5.4-5.7					✓		✓	
5.7-6					✓		✓	
6-6.5					✓		✓	
7.8-8.6					✓		✓	

Settings

X6

SBREX6



Size (mm)	S/S	9ct Y/G	9ct W/G	9ct R/G	Platinum	18ct Y/G	18ct W/G	18ct R/G
2.5		✓	✓	✓	✓	✓	✓	✓
3		✓	✓	✓	✓	✓	✓	✓
3.5		✓	✓	✓	✓	✓	✓	✓
4		✓	✓	✓	✓	✓	✓	✓
4.5		✓	✓	✓	✓	✓	✓	✓
5		✓	✓	✓	✓	✓	✓	✓
5.5		✓	✓	✓	✓	✓	✓	✓
6		✓	✓	✓	✓	✓	✓	✓
6.5		✓	✓	✓	✓	✓	✓	✓
7		✓	✓	✓	✓	✓	✓	✓

Pear

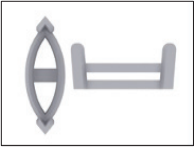
SPC9



Size (mm)	S/S	9ct Y/G	9ct W/G	9ct R/G	Platinum	18ct Y/G	18ct W/G	18ct R/G
5x3		✓	✓	✓	✓	✓	✓	✓
6x4		✓	✓	✓	✓	✓	✓	✓
7x5		✓	✓	✓	✓	✓	✓	✓
8x5		✓	✓	✓	✓	✓	✓	✓
9x6		✓	✓	✓	✓	✓	✓	✓
10x7		✓	✓	✓	✓	✓	✓	✓
12x8		✓	✓	✓	✓	✓	✓	✓

Marquis Flat Rail

SM1



Size (mm)	S/S	9ct Y/G	9ct W/G	9ct R/G	Platinum	18ct Y/G	18ct W/G	18ct R/G
5 x 2.5		✓	✓	✓	✓	✓	✓	✓
6 x 3.5		✓	✓	✓	✓	✓	✓	✓
7.5 x 3.5		✓	✓	✓	✓	✓	✓	✓
8 x 4		✓	✓	✓	✓	✓	✓	✓
11 x 5		✓	✓	✓	✓	✓	✓	✓
13 x 6		✓	✓	✓	✓	✓	✓	✓

Marquis Setting

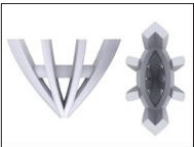
SM2



Size (mm)	S/S	9ct Y/G	9ct W/G	9ct R/G	Platinum	18ct Y/G	18ct W/G	18ct R/G
5 x 2.5		✓	✓	✓	✓	✓	✓	✓
6 x 3.5		✓	✓	✓	✓	✓	✓	✓
7.5 x 3.5		✓	✓	✓	✓	✓	✓	✓
8 x 4		✓	✓	✓	✓	✓	✓	✓
11 x 5		✓	✓	✓	✓	✓	✓	✓
13 x 6		✓	✓	✓	✓	✓	✓	✓

Marquise S

SM3

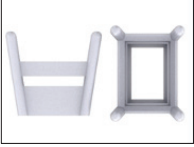


Size (mm)	S/S	9ct Y/G	9ct W/G	9ct R/G	Platinum	18ct Y/G	18ct W/G	18ct R/G
3.5 x 2.5		✓	✓	✓	✓	✓	✓	✓
4 x 2.5		✓	✓	✓	✓	✓	✓	✓
5 x 3		✓	✓	✓	✓	✓	✓	✓
6 x 3		✓	✓	✓	✓	✓	✓	✓
7 x 3		✓	✓	✓	✓	✓	✓	✓
7.3 x 3.3		✓	✓	✓	✓	✓	✓	✓
8 x 3.5		✓	✓	✓	✓	✓	✓	✓
9.3 x 4.5		✓	✓	✓	✓	✓	✓	✓
10 x 5		✓	✓	✓	✓	✓	✓	✓
12 x 5.5		✓	✓	✓	✓	✓	✓	✓
13 x 6		✓	✓	✓	✓	✓	✓	✓
15 x 7		✓	✓	✓	✓	✓	✓	✓

Settings

Emerald Round Claws

SE4C1



Size (mm)	S/S	9ct Y/G	9ct W/G	9ct R/G	Platinum	18ct Y/G	18ct W/G	18ct R/G
5 x 3		✓	✓	✓	✓	✓	✓	✓
5 x 4		✓	✓	✓	✓	✓	✓	✓
6 x 4		✓	✓	✓	✓	✓	✓	✓
7 x 5		✓	✓	✓	✓	✓	✓	✓
8 x 6		✓	✓	✓	✓	✓	✓	✓
9 x 7		✓	✓	✓	✓	✓	✓	✓
10 x 8		✓	✓	✓	✓	✓	✓	✓
12 x 10		✓	✓	✓	✓	✓	✓	✓

Emerald Bezel

SEB1



Size (mm)	S/S	9ct Y/G	9ct W/G	9ct R/G	Platinum	18ct Y/G	18ct W/G	18ct R/G
5 x 3		✓	✓	✓	✓	✓	✓	✓
6 x 4		✓	✓	✓	✓	✓	✓	✓
7 x 5		✓	✓	✓	✓	✓	✓	✓
8 x 6		✓	✓	✓	✓	✓	✓	✓
9 x 7		✓	✓	✓	✓	✓	✓	✓
10 x 8		✓	✓	✓	✓	✓	✓	✓
12 x 10		✓	✓	✓	✓	✓	✓	✓